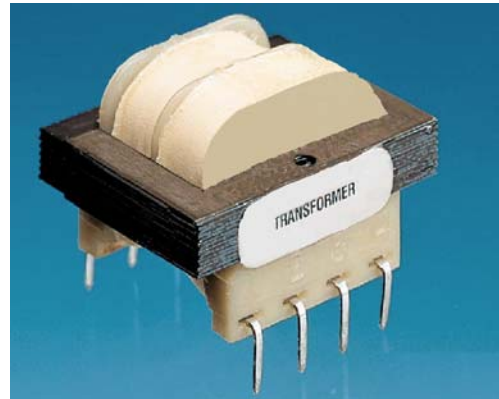


RP77 Series

Universal Input PCB Mount Transformer

**RP77
UPTO 36VA
PCB TRANSFORMER**

ROHS COMPLIANT



Specifications

- Power:** 1.1VA to 36VA
- Dielectric Strength:** 2500VRMS Hi-pot
- Primaries:** Single or Dual primary (115/230V- 50/60 Hz)
- Secondaries:** Series or Parallel
- Insulation:** Class B insulation (130°C)
- Flammability:** Bobbin / Casing meet UL 94V0
- Safety Approvals:** UL 506, CSA C22.6 No. 66

Part Number / Ordering

Part Number		Secondary RMS Rating	
Single 115V 6 Pin	Dual 115/230V 8 Pin	Series	Parallel
RP77-2F-010S RP77-3F-010S RP77-4F-010S RP77-5F-010S RP77-6-010S RP77-7F-010S	RP77-2F-010D RP77-3F-010D RP77-4F-010D RP77-5F-010D RP77-6F-010D RP77-7F-010D	10VCT @ 0.11A 10VCT @ 0.25A 10VCT @ 0.6A 10VCT @ 1.2A 10VCT @ 2.0A 10VCT @ 3.6A	5V @ 0.22A 5V @ 0.5A 5V @ 1.2A 5V @ 2.4A 5V @ 4.0A 5V @ 7.2A
RP77-2F-012S RP77-3F-012S RP77-4F-012S RP77-5F-012S RP77-6F-012S RP77-7F-012S	RP77-2F-012D RP77-3F-012D RP77-4F-012D RP77-5F-012D RP77-6F-012D RP77-7F-012D	12.6VCT @ 0.09A 12.6VCT @ 0.2A 12.6VCT @ 0.5A 12.6VCT @ 1.0A 12.6VCT @ 1.6A 12.6VCT @ 2.85A	6.3V @ 0.18A 6.3V @ 0.4A 6.3V @ 1.0A 6.3V @ 2.0A 6.3V @ 3.2A 6.3V @ 5.7A
RP77-2F-016S RP77-3F-016S RP77-4F-016S RP77-5F-016S RP77-6F-016S RP77-7F-016S	RP77-2F-016D RP77-3F-016D RP77-4F-016D RP77-5F-016D RP77-6F-016D RP77-7F-016D	16VCT @ 0.07A 16VCT @ 0.15A 16VCT @ 0.4A 16VCT @ 0.8A 16VCT @ 1.25A 16VCT @ 2.25A	8V @ 0.14A 8V @ 0.3A 8V @ 0.8A 8V @ 1.6A 8V @ 2.5A 8V @ 4.5A
RP77-2F-020S RP77-3F-020S RP77-4F-020S RP77-5F-020S RP77-6F-020S RP77-7F-020S	RP77-2F-020D RP77-3F-020D RP77-4F-020D RP77-5F-020D RP77-6F-020D RP77-7F-020D	20VCT @ 0.055A 20VCT @ 0.12A 20VCT @ 0.3A 20VCT @ 0.6A 20VCT @ 1.0A 20VCT @ 1.8A	10V @ 0.11A 10V @ 0.24A 10V @ 0.6A 10V @ 1.2A 10V @ 2.0A 10V @ 3.6A
RP77-2F-024S RP77-3F-024S RP77-4F-024S RP77-5F-024S RP77-6F-024S RP77-7F-024S	RP77-2F-024D RP77-3F-024D RP77-4F-024D RP77-5F-024D RP77-6F-024D RP77-7F-024D	24VCT @ 0.045A 24VCT @ 0.1A 24VCT @ 0.25A 24VCT @ 0.5A 24VCT @ 0.8A 24VCT @ 1.5A	12V @ 0.09A 12V @ 0.2A 12V @ 0.5A 12V @ 1.0A 12V @ 1.6A 12V @ 3.0A

Part Number		Secondary RMS Rating	
Single 115V 6 Pin	Dual 115/230V 8 Pin	Series	Parallel
RP77-2F-028S RP77-3F-028S RP77-4F-028S RP77-5F-028S RP77-6F-028S RP77-7F-028S	RP77-2F-028D RP77-3F-028D RP77-4F-028D RP77-5F-028D RP77-6F-028D RP77-7F-028D	28VCT @ 0.04A 28VCT @ 0.085A 28VCT @ 0.2A 28VCT @ 0.42A 28VCT @ 0.7A 28VCT @ 1.3A	14V @ 0.08A 14V @ 0.17A 14V @ 0.4A 14V @ 0.84A 14V @ 1.4A 14V @ 2.6A
RP77-2F-036S RP77-3F-036S RP77-4F-036S RP77-5F-036S RP77-6F-036S RP77-7F-036S	RP77-2F-036D RP77-3F-036D RP77-4F-036D RP77-5F-036D RP77-6F-036D RP77-7F-036D	36VCT @ 0.03A 36VCT @ 0.065A 36VCT @ 0.17A 36VCT @ 0.35A 36VCT @ 0.55A 36VCT @ 1.0A	18V @ 0.06A 18V @ 0.13A 18V @ 0.34A 18V @ 0.7A 18V @ 1.1A 18V @ 2.0A
RP77-2F-048S RP77-3F-048S RP77-4F-048S RP77-5F-048S RP77-6F-048S RP77-7F-048S	RP77-2F-048D RP77-3F-048D RP77-4F-048D RP77-5F-048D RP77-6F-048D RP77-7F-048D	48VCT @ 0.023A 48VCT @ 0.05A 48VCT @ 0.125A 48VCT @ 0.25A 48VCT @ 0.4A 48VCT @ 0.75A	24V @ 0.046A 24V @ 0.1A 24V @ 0.25A 24V @ 0.5A 24V @ 0.8A 24V @ 1.5A
RP77-2F-056S RP77-3F-056S RP77-4F-056S RP77-5F-056S RP77-6F-056S RP77-7F-056S	RP77-2F-056D RP77-3F-056D RP77-4F-056D RP77-5F-056D RP77-6F-056D RP77-7F-056D	56VCT @ 0.02A 56VCT @ 0.045A 56VCT @ 0.11A 56VCT @ 0.22A 56VCT @ 0.35A 56VCT @ 0.65A	28V @ 0.04A 28V @ 0.09A 28V @ 0.22A 28V @ 0.44A 28V @ 0.7A 28V @ 1.3A
RP77-2F-120S RP77-3F-120S RP77-4F-120S RP77-5F-120S RP77-6F-120S RP77-7F-120S	RP77-2F-120D RP77-3F-120D RP77-4F-120D RP77-5F-120D RP77-6F-120D RP77-7F-120D	120VCT @ 0.01A 120VCT @ 0.02A 120VCT @ 0.05A 120VCT @ 0.1A 120VCT @ 0.16A 120VCT @ 0.3A	60V @ 0.02A 60V @ 0.04A 60V @ 0.1A 60V @ 0.2A 60V @ 0.32A 60V @ 0.6A

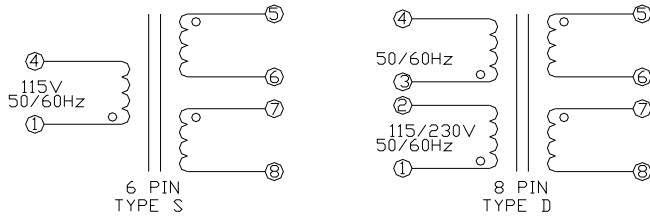
Dimensions shown for reference only.
Specifications subject to change.

RADIUS POWER
Standard & Custom Products

www.radiuspower.com
PH 714-289-0055
FAX 714-289-214

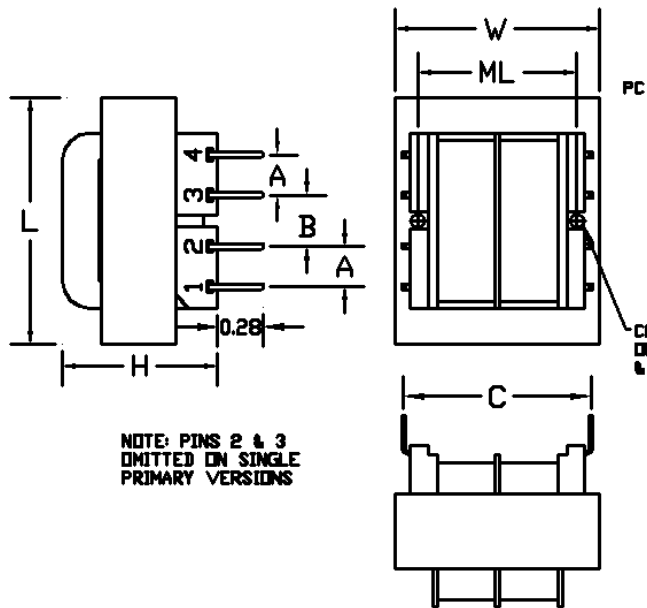
RP77 Series Universal Input PCB Mount Transformer

Schematic



(SEE MECHANICAL DRAWING FOR CORRECT FOOTPRINT)

Mechanicals



Size	VA	Dimensions (Inches)							Optional Mtg. Screw & Nut	Weight
		L	W	H	ML	A	B	C		
2	1.1	1.37	1.12	0.97	-	0.250	0.250	1.200	None	0.18 lbs
3	2.4	1.37	1.12	1.21	-	0.250	0.250	1.200	None	0.25 lbs
4	6	1.62	1.31	1.31	1.06	0.250	0.350	1.250	4-40 x 1.37 Nylon	0.45 lbs
5	12	1.87	1.59	1.45	1.25	0.300	0.400	1.410	4-40 x 1.37 Nylon	0.70 lbs
6	20	2.25	1.87	1.45	1.50	0.300	0.400	1.600	4-40 x 1.37 Nylon	0.79 lbs
7	36	2.62	2.18	1.59	*	0.400	0.400	1.850	*	1.20 lbs

* Size 7 has 4 mtg. holes on 2.18 x 1.75 centers for a #6 screw. Need not be nylon.

Dimensions shown for reference only.
Specifications subject to change.

RADIUS POWER
Standard & Custom Products

www.radiuspower.com
PH 714-289-0055
FAX 714-289-214