

RP655 Series

Single Line Dual Stage DC Filter

**RP655
HIGH PERFORMANCE TO 20A
DC FILTER**

ROHS COMPLIANT

Specifications

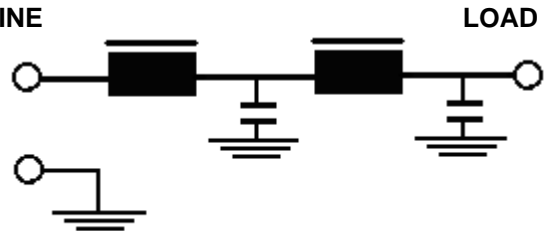
Max Operating Voltage: 250Vdc
Ambient Temperature: 55°C
Inrush Rating: 20x (10ms), 1.5x (1.5min)
Climatic Category : 25/100/21
Hipot Rating: 2500VDC (P/N - E)
Terminals: .250 QD Tabs



Part Number / Ordering

RP655	-X (Amps)	-Y (Ycap, nF)	-T
	3	0	QD
	6	.22	
	10	.47	
	20	1	
		2.2	
		3.3	
		4.7	
		10	
		22	
		33	
		47	
		100	
		1000	

Schematic



Note: Use any -Y (Ycap) with any -X (Amps) rating
 e.g. RP655-20-4.7-QD
 20 Amps with 4.7nF y-caps

Dimensions shown for reference only.
 Specifications subject to change.

RADIUS POWER
 Standard & Custom Products

www.radiuspower.com
 PH 714-289-0055
 FAX 714-289-214

RP655

Typical Insertion Loss, 50/50ohm

Mechanicals

3 AMP

FREQ(MHz)	.15	.5	1	10	30
dB	25	42	60	60	40

6 AMP

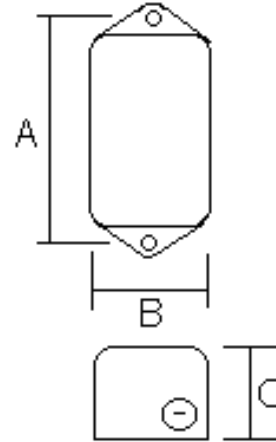
FREQ(MHz)	.15	.5	1	10	30
dB	22	40	60	60	38

10 AMP

FREQ(MHz)	.15	.5	1	10	30
dB	18	38	45	45	35

20 AMP

FREQ(MHz)	.15	.5	1	10	30
dB	15	35	40	40	25



A	B	C	MTG HOLE
4.06	2.2	1.8	.2

Dimensions shown for reference only.
Specifications subject to change.

RADIUS POWER
Standard & Custom Products

www.radiuspower.com
PH 714-289-0055
FAX 714-289-214