

**RP650 Series**

**Single Line Single Stage Hi-Perf DC Filter**

**RP650  
HIGH PERFORMANCE TO 20A  
DC FILTER**

ROHS COMPLIANT

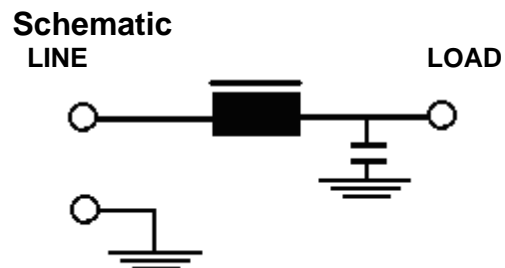
**Specifications**

**Max Operating Voltage:** 250Vdc  
**Ambient Temperature:** 55°C  
**Inrush Rating:** 20x (10ms), 1.5x (1.5min)  
**Climatic Category :** 25/100/21  
**Hipot Rating:** 2500VDC (P/N - E)  
**Terminals:** .250 QD Tabs



**Part Number / Ordering**

RP650	-X (Amps)	-Y (Ycap, nF)	-T
	3	0	QD
	6	.22	
	10	.47	
	20	1	
		2.2	
		3.3	
		4.7	
		10	
		22	
		33	
		47	
		100	
		1000	



Note: Use any -Y (Ycap) with any -X (Amps) rating  
 e.g. RP650-20-4.7-QD  
 20 Amps with 4.7nF y-caps

Dimensions shown for reference only.  
 Specifications subject to change.

**RADIUS POWER**  
 Standard & Custom Products

www.radiuspower.com  
 PH 714-289-0055  
 FAX 714-289-214

**RP650**

Typical Insertion Loss, 50/50ohm

**Mechanicals**

**3 AMP**

<b>FREQ(MHz)</b>	<b>.15</b>	<b>.5</b>	<b>1</b>	<b>10</b>	<b>30</b>
<b>dB</b>	20	40	60	60	40

**6 AMP**

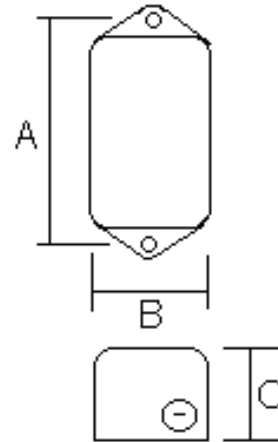
<b>FREQ(MHz)</b>	<b>.15</b>	<b>.5</b>	<b>1</b>	<b>10</b>	<b>30</b>
<b>dB</b>	15	35	55	55	38

**10 AMP**

<b>FREQ(MHz)</b>	<b>.15</b>	<b>.5</b>	<b>1</b>	<b>10</b>	<b>30</b>
<b>dB</b>	10	30	50	50	35

**20 AMP**

<b>FREQ(MHz)</b>	<b>.15</b>	<b>.5</b>	<b>1</b>	<b>10</b>	<b>30</b>
<b>dB</b>	8	25	35	35	25



<b>A</b>	<b>B</b>	<b>C</b>	<b>MTG HOLE</b>
2.95	2.2	1.57	.2

Dimensions shown for reference only.  
Specifications subject to change.

**RADIUS POWER**  
Standard & Custom Products

www.radiuspower.com  
PH 714-289-0055  
FAX 714-289-214