

RP615 Series

High Performance Dual Stage DC Filter

**RP615
HIGH PERFORMANCE TO 20A
DC FILTER**

ROHS COMPLIANT



Specifications

Max Operating Voltage: 250Vdc
Ambient Temperature: 50°C
Inrush Rating: 20x (10ms), 1.5x (1.5min)
Climatic Category : 25/100/21
Hipot Rating: 2500VDC (P/N - E)
Terminals: .250 QD Tabs

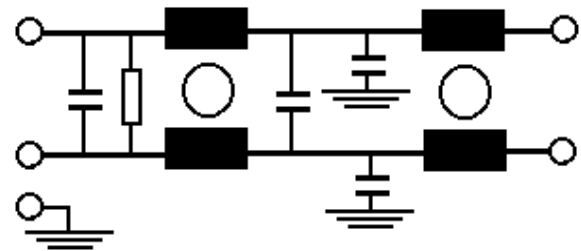
Designed according to UL1283 / CSA C22.2 No.8 / EN133200

Part Number / Ordering

RP615	-X (Amps)	-Y (Ycap, nF)	-T
	3	4.7	QD
	6		
	10		
	20		

Note: -Y used with any -X amperage filter.
 Alternate Y-cap values available upon request.

Schematic
LINE



LOAD

Dimensions shown for reference only.
 Specifications subject to change.

RADIUS POWER
 Standard & Custom Products

www.radiuspower.com
 PH 714-289-0055
 FAX 714-289-214

RP615	Typical Insertion Loss, 50/50ohm	Mechanicals
--------------	----------------------------------	--------------------

3 AMP

FREQ(MHz)	.15	.5	1	10	30
CM, dB	60	70	70	52	50
DM, dB	50	60	68	60	60

6 AMP

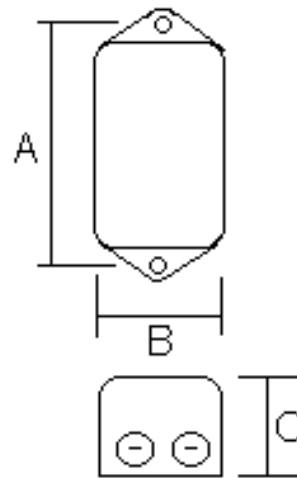
FREQ(MHz)	.15	.5	1	10	30
CM, dB	60	70	70	52	50
DM, dB	50	60	68	60	60

10 AMP

FREQ(MHz)	.15	.5	1	10	30
CM, dB	55	70	70	50	50
DM, dB	45	60	60	70	65

20 AMP

FREQ(MHz)	.15	.5	1	10	30
CM, dB	40	65	70	52	40
DM, dB	34	58	60	65	60



A	B	C	MTG HOLE
4.06	2.2	1.8	.2