

RP610 Series

High Performance Single Stage DC Filter

**RP610
HIGH PERFORMANCE TO 20A
DC FILTER**

ROHS COMPLIANT



Specifications

Max Operating Voltage: 250Vdc
Ambient Temperature: 50°C
Inrush Rating: 20x (10ms), 1.5x (1.5min)
Climatic Category : 25/100/21
Hipot Rating: 2500VDC (P/N - E)
Terminals: .250 QD Tabs

Designed according to UL1283 / CSA C22.2 No.8 / EN133200

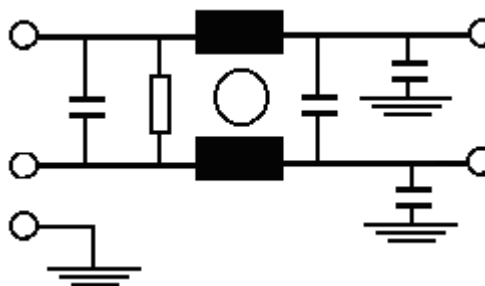
Part Number / Ordering

RP610	-X (Amps)	-Y (Ycap, nF)	-T
	3	4.7	QD
	6		
	10		
	20		

Note: -Y used with any -X amperage filter.
 Alternate Y-caps available upon request.

Schematic
LINE

LOAD



Dimensions shown for reference only.
 Specifications subject to change.

RADIUS POWER
 Standard & Custom Products

www.radiuspower.com
 PH 714-289-0055
 FAX 714-289-214

RP610

Typical Insertion Loss, 50/50ohm

Mechanicals
3 AMP

FREQ(MHz)		.15	.5	1	10	30
CM, dB		40	55	65	65	60
DM, dB		40	60	65	75	70

6 AMP

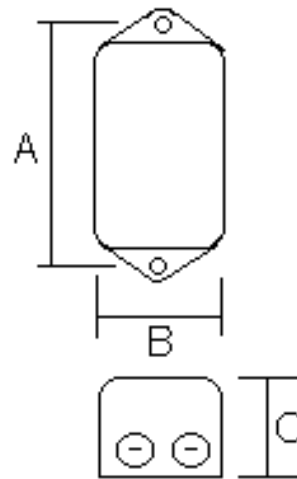
FREQ(MHz)		.15	.5	1	10	30
CM, dB		40	55	65	65	60
DM, dB		42	62	65	75	70

10 AMP

FREQ(MHz)		.15	.5	1	10	30
CM, dB		40	55	65	65	60
DM, dB		45	65	65	75	70

20 AMP

FREQ(MHz)		.15	.5	1	10	30
CM, dB		20	28	34	55	60
DM, dB		30	55	58	60	60



A	B	C	MTG HOLE
2.95	2.2	1.57	.2

Dimensions shown for reference only.
Specifications subject to change.

RADIUS POWER
Standard & Custom Products

www.radiuspower.com
PH 714-289-0055
FAX 714-289-214