

**RP415 Series**

**3-Phase Wye 1-Stage Power Line Filter**

**RP415  
COMPACT 3PH WYE TO 160A  
CHASSIS MOUNT FILTER**



**Specifications**

**ROHS COMPLIANT**

**Operating Frequency:** DC - 60Hz  
**Operating Voltage:** 480V +10%  
**Ambient Temperature:** 50°C  
**Inrush Rating:** 20x (10ms), 1.5x (1min)  
**Climatic Category:** 25/100/21  
**Hipot Rating:** 3000VDC (P/N - E)  
**Terminals: -S:** 8/16/25/36 (M5), 64/80 (M6)  
 120/160 (M10)

Other terminations available. Please contact factory  
**Safety Approvals:** UR/cCSAus/EN133200

**Part Number/Ordering**

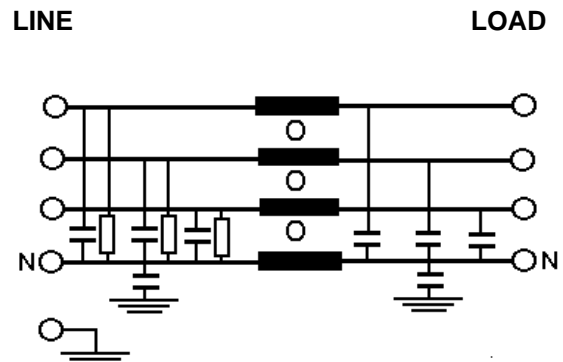
RP415	-X (Amps)	-Y (Ycap, nF)	-T
	8	0	S
	16	.22	
	25	.47	
	36	1	
	64	2.2	
	80	4.7	
	120	10	
	160	22	
		100	
		1000	
		2200	

Note: Use any -Y (Ycap) with any -X (Amps) rating  
 e.g. RP415-8-22-S  
 8 Amps with 22nF y-caps

**Leakage Current**

Ycap, nF	mA, 400V/50HZ
0	0
.22	.004
.47	.009
1	.018
2.2	.04
3.3	.06
4.7	.09
10	.18
22	.4
100	1.8
1000	18
2200	30

**Schematic**



Dimensions shown for reference only.  
 Specifications subject to change.

**RADIUS POWER**  
 Standard & Custom Products

www.radiuspower.com  
 PH 714-289-0055  
 FAX 714-289-214

**RP415 Typical Insertion Loss, 50/50ohm**
**Mechanicals**
**8 AMP**

FREQ(MHz)		.15	.5	1	10	30
CM, dB		65	58	55	45	32
DM, dB		52	80	78	65	60

**16 AMP**

FREQ(MHz)		.15	.5	1	10	30
CM, dB		50	46	45	45	40
DM, dB		50	75	75	70	70

**25 AMP**

FREQ(MHz)		.15	.5	1	10	30
CM, dB		55	65	60	50	45
DM, dB		60	80	75	60	60

**36AMP**

FREQ(MHz)		.15	.5	1	10	30
CM, dB		50	60	55	40	40
DM, dB		60	76	75	65	55

**64AMP**

FREQ(MHz)		.15	.5	1	10	30
CM, dB		50	65	60	50	40
DM, dB		60	80	75	60	60

**80AMP**

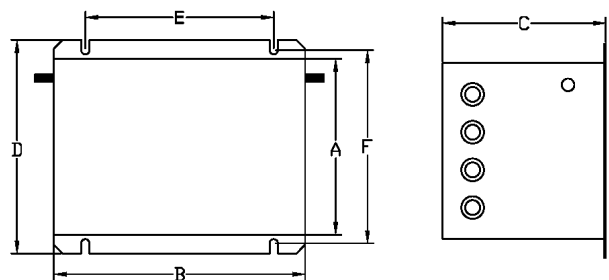
FREQ(MHz)		.15	.5	1	10	30
CM, dB		45	65	60	45	40
DM, dB		60	80	80	65	60

**120AMP**

FREQ(MHz)		.15	.5	1	10	30
CM, dB		50	70	68	60	55
DM, dB		80	70	60	45	45

**160AMP**

FREQ(MHz)		.15	.5	1	10	30
CM, dB		65	70	60	45	40
DM, dB		70	75	70	55	50



I	A	B	C	D	E	F	MTG
8/16	4.52	4.72	3.15	5.63	3.15	5.02	.43x.25
25/36	4.92	5.12	4.52	6.02	3.54	5.41	.43x.25
64	4.92	5.52	4.92	6.02	3.94	5.41	.43x.25
80	5.52	6.3	4.33	6.7	4.33	6.04	.45x.25
120	5.52	7.1	5.12	6.7	5.12	6.04	.45x.25
160	5.52	7.87	5.12	6.7	5.90	6.04	.45x.25

Dimensions shown for reference only.  
Specifications subject to change.

**RADIUS POWER**  
Standard & Custom Products

www.radiuspower.com  
PH 714-289-0055  
FAX 714-289-214