

RP410HP Series Ultra Compact 3-Phase Wye 1-Stage Power Line Filter

**RP410HP
High Performance
3PH WYE TO 20A
CHASSIS MOUNT FILTER**

ROHS COMPLIANT



Specifications

Operating Frequency: DC - 60Hz
Operating Voltage: 480V +10%
Ambient Temperature: 50°C
Inrush Rating: 20x (10ms), 1.5x (1min)
Climatic Category: 25/100/21
Hipot Rating: 3000VDC (P/N - E)
Terminals: .250 QD Tabs
Safety Approvals: UR/cCSAus/EN133200

Leakage Current

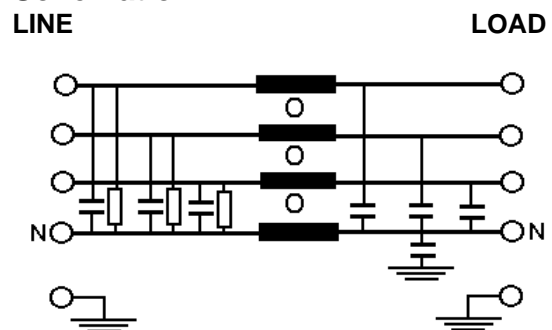
Ycap, nF	mA, 400V/50HZ
0	0
.22	.004
.47	.009
1	.018
2.2	.04
3.3	.06
4.7	.09
10	.18
22	.4
100	1.8

Part Number/Ordering

RP410HP	-X (Amps)	-Y (Ycap, nF)
	6	0
	10	.22
	20	.47
		1
		2.2
		4.7
		10
		22
		100

Note: Use any -Y (Ycap) with any -X (Amps) rating
 e.g. RP410HP-20-22
 20 Amps with 22nF y-caps

Schematic



Dimensions shown for reference only.
 Specifications subject to change.

RADIUS POWER
 Standard & Custom Products

www.radiuspower.com
 PH 714-289-0055
 FAX 714-289-214

RP410HP Typical Insertion Loss, 50/50ohm

Mechanicals

6 AMP

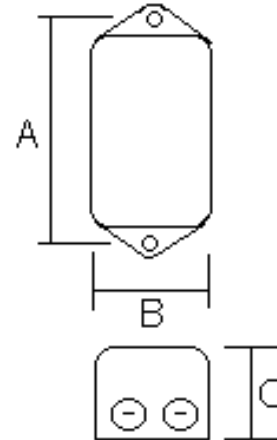
FREQ(MHz)		.15	.5	1	10	30
CM, dB		52	75	80	80	70
DM, dB		28	40	47	67	66

10 AMP

FREQ(MHz)		.15	.5	1	10	30
CM, dB		32	60	65	70	67
DM, dB		32	38	44	66	62

20 AMP

FREQ(MHz)		.15	.5	1	10	30
CM, dB		20	38	60	70	75
DM, dB		28	36	44	62	65



A	B	C	MTG HOLE
2.95	2.2	1.57	.2