

**RP410 Series      Ultra Compact 3-Phase Wye 1-Stage Power Line Filter**

**RP410  
COMPACT 3PH WYE TO 20A  
CHASSIS MOUNT FILTER**

ROHS COMPLIANT



**Specifications**

**Operating Frequency:** DC - 60Hz  
**Operating Voltage:** 480V +10%  
**Ambient Temperature:** 40°C  
**Inrush Rating:** 20x (10ms), 1.5x (1min)  
**Climatic Category:** 25/100/21  
**Hipot Rating:** 3000VDC (P/N - E)  
**Terminals:** .250 QD Tabs  
**Safety Approvals:** UR/cUR/EN133200

**Leakage Current**

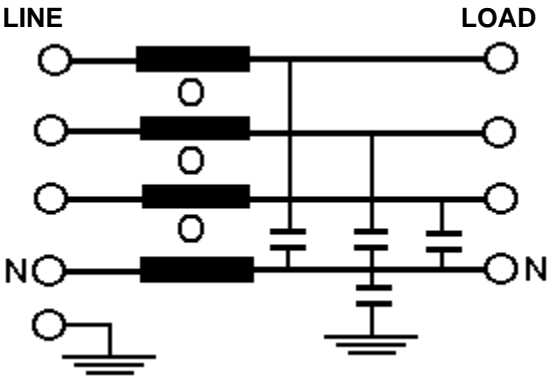
Ycap, nF	mA, 400V/50HZ
0	0
.22	.004
.47	.009
1	.018
2.2	.04
3.3	.06
4.7	.09
10	.18
22	.4
100	1.8

**Part Number/Ordering**

RP410	-X (Amps)	-Y (Ycap, nF)
	6	0
	10	.22
	20	.47
		1
		2.2
		4.7
		10
		22
		100

Note: Use any -Y (Ycap) with any -X (Amps) rating  
 e.g. RP410-20-22  
 20 Amps with 22nF y-caps

**Schematic**



Dimensions shown for reference only.  
 Specifications subject to change.

**RP410 Typical Insertion Loss, 50/50ohm**

**Mechanicals**

**6 AMP**

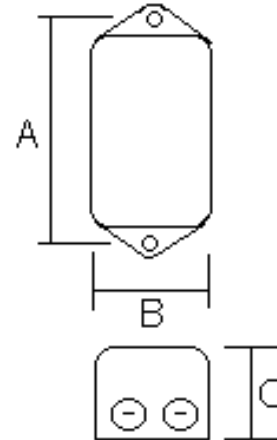
<b>FREQ(MHz)</b>	<b>.15</b>	<b>.5</b>	<b>1</b>	<b>10</b>	<b>30</b>
<b>CM, dB</b>	26	40	45	45	40
<b>DM, dB</b>	16	28	35	55	55

**10 AMP**

<b>FREQ(MHz)</b>	<b>.15</b>	<b>.5</b>	<b>1</b>	<b>10</b>	<b>30</b>
<b>CM, dB</b>	16	30	35	40	36
<b>DM, dB</b>	16	26	32	54	56

**20 AMP**

<b>FREQ(MHz)</b>	<b>.15</b>	<b>.5</b>	<b>1</b>	<b>10</b>	<b>30</b>
<b>CM, dB</b>	10	20	30	40	45
<b>DM, dB</b>	16	24	32	52	55



A	B	C	MTG HOLE
2.95	2.2	1.57	.2

Dimensions shown for reference only.  
Specifications subject to change.

**RADIUS POWER**  
Standard & Custom Products

www.radiuspower.com  
PH 714-289-0055  
FAX 714-289-214