

RP310 Series Ultra Compact 3-Phase 1-Stage Power Line Filter

**RP310
3PH DELTA TO 20A
CHASSIS MOUNT FILTER**

ROHS COMPLIANT



Specifications

- Operating Frequency:** DC - 60Hz
- Operating Voltage:** 480V +10%
- Ambient Temperature:** 50°C
- Inrush Rating:** 20x (10ms), 1.5x (1min)
- Climatic Category:** 25/100/21
- Hipot Rating:** 3000VDC (P/N - E)
- Terminals:** .250 QD Tabs
- Safety Approvals:** UR/cCSAus/EN133200

Leakage Current

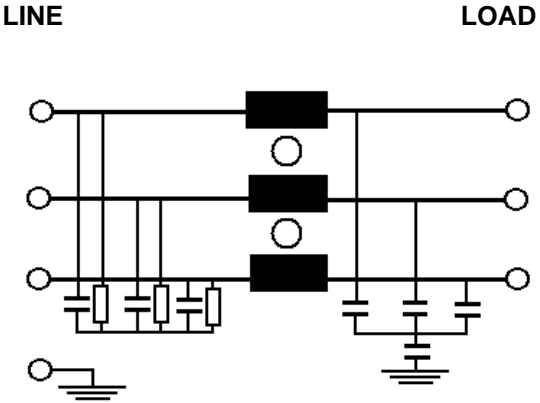
Ycap, nF	mA, 400V/50HZ
0	0
.22	.004
.47	.009
1	.018
2.2	.04
3.3	.06
4.7	.09
10	.18
22	.4
100	1.8

Part Number/Ordering

RP310	-X (Amps)	-Y (Ycap, nF)
	6	0
	10	.22
	20	.47
		1
		2.2
		4.7
		10
		22
		100

Note: Use any -Y (Ycap) with any -X (Amps) rating
e.g. RP310-20-22
20 Amps with 22nF y-caps

Schematic



Dimensions shown for reference only.
Specifications subject to change.

RP310 Typical Insertion Loss, 50/50ohm

Mechanicals

6 AMP

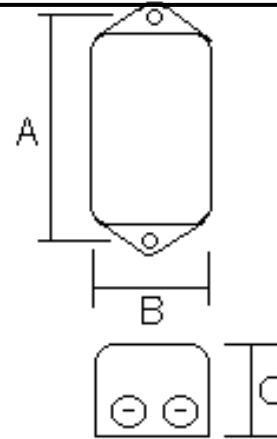
FREQ(MHz)		.15	.5	1	10	30
CM, dB		54	76	82	82	72
DM, dB		28	40	47	67	66

10 AMP

FREQ(MHz)		.15	.5	1	10	30
CM, dB		34	62	67	72	69
DM, dB		32	38	44	66	62

20 AMP

FREQ(MHz)		.15	.5	1	10	30
CM, dB		22	40	62	72	76
DM, dB		28	36	44	62	65



A	B	C	MTG HOLE
2.95	2.2	1.57	.2