

RP230 Series **Hi-Perf Dual Stage Power Line Filter**

**RP230
DUAL STAGE TO 40A
CHASSIS MOUNT FILTER**

ROHS COMPLIANT



Specifications

Operating Freq.: DC - 60Hz
Operating Voltage: 250V +10%
Ambient Temperature: 40°C
Inrush Rating: 20x (10ms), 1.5x (1.5min)
Climatic Category : 25/100/21
Hipot Rating: 2500VDC (P/N - E)
Terminals: .250 QD Tabs
 M4 (30/40A)
Safety Approvals: cCSAus/UR/EN133200

Leakage Current

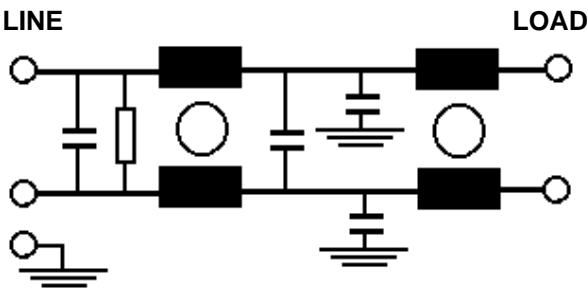
Ycap, nF	mA, 120V/60HZ	mA, 250V/50HZ
0	0	0
.22	.02	.035
.47	.042	.074
1	.09	.15
2.2	.2	.35
3.3	.3	.52
4.7	.42	.74
10	.9	1.5

Part Number / Ordering

RP230	-X (Amps)	-Y (Ycap, nF)	-T
	3.5	0	QD
	6.5	.22	S
	20	.47	
	30	1	
	40	2.2	
		3.3	
		4.7	
		10	

Note: Use any -Y (Ycap) with any -X (Amps) rating
 e.g. RP230-40-4.7-S
 40 Amps with 4.7nF y-caps

Schematic



Dimensions shown for reference only.
 Specifications subject to change.

RP230 Typical Insertion Loss, 50/50ohm

Mechanicals

3.5 AMP

FREQ(MHz)	.15	.5	1	10	30
CM, dB	60	62	62	52	45
DM, dB	40	60	68	60	60

6.5 AMP

FREQ(MHz)	.15	.5	1	10	30
CM, dB	60	62	62	50	40
DM, dB	40	60	68	60	60

20 AMP

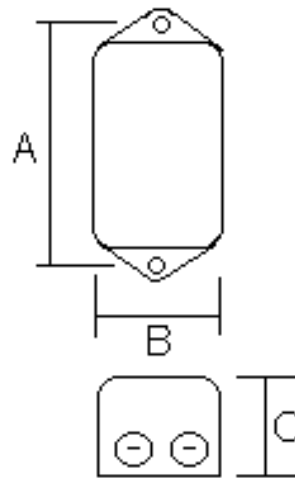
FREQ(MHz)	.15	.5	1	10	30
CM, dB	24	46	50	60	60
DM, dB	25	40	60	65	65

30 AMP

FREQ(MHz)	.15	.5	1	10	30
CM, dB	42	50	55	65	60
DM, dB	60	60	65	65	65

40 AMP

FREQ(MHz)	.15	.5	1	10	30
CM, dB	28	44	55	60	60
DM, dB	50	52	65	65	65



	A	B	C	MTG HOLE
3.5/6.5/20	2.95	2	1.57	.2
30/40	5.63	2.2	2.1	.2

Dimensions shown for reference only.
Specifications subject to change.

RADIUS POWER
Standard & Custom Products

www.radiuspower.com
PH 714-289-0055
FAX 714-289-214