

700-075 Series

Universal and Single Input 40VA Transformer

700-075 Series 40VA CHASSIS MOUNT

ROHS COMPLIANT



Specifications

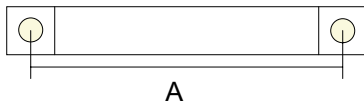
Operating Freq.: 50/60Hz
Input Voltage: 120V/208V/240V
Output Voltage: 12V- 24VAC / 10-20VAC
Ambient Temperature: 40°C
Efficiency: >85%
Regulation: 12%
Temp rise: 75 Deg C Max at rated load
Hipot Rating: 2500VAC
Terminals: Lead wires (700-075-3 / -4)
 Tabs (700-075)
Safety Approvals: UL506 (700-075-3 / -4)
 UL1585 (700-075)
 CSA22.2No.66-98

Part Number / Details

MODEL/PN	VA	CLASS	OP, VAC
700-075	40	F	12-24
700-075-3	40	B	10-20
700-075-4	40	B	10-20

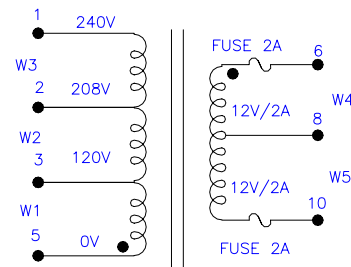
Mechanicals

Overall: 2.7(L) x 1.85(D) x 2.25(HT) IN
 (D is depth including bobbin)
Mounting (A): 3.145 IN
Mounting Hole: Slot, 0.20x0.25 IN, 2x

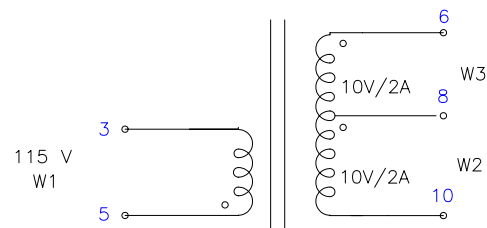


Schematic

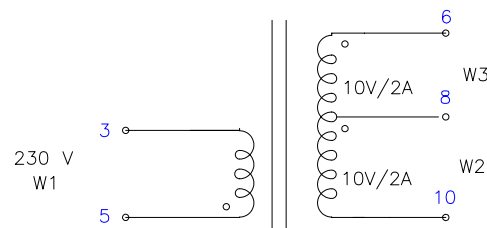
700-075



700-075-3



700-075-4



Catalog 01-07 Dimensions are shown for Reference purposes only. Specifications are subject to change.

RADIUS POWER
Standard & Custom Products

www.radiuspower.com
PH 714-289-0055
FAX 714-289-2149