



RPTC2012-60

TEMPEST/COTS AC 3PH WYE, 480V EMI Power Line Filter

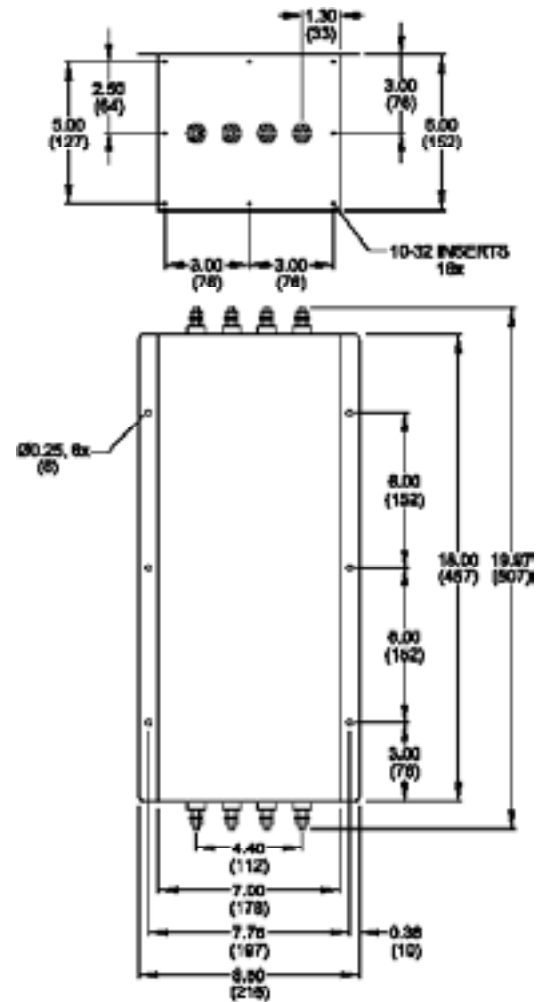
**RPTC2012-60  
TEMPEST/ COTS  
3 PHASE WYE, 60A, 480V  
100dB  
14K - 10GHz**



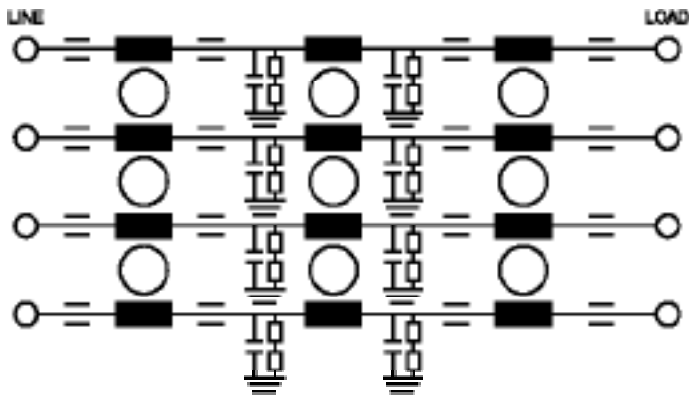
### SPECIFICATIONS

Operating Freq.	: 47-63Hz
Max. Operating Voltage	: 480VAC
Ambient Temperature	: -40 to 70C
Hipot Rating (L-G)	: 1500VDC
Terminals (-T)	: S: 1/4-20
Applications	: TEMPEST/Mil-461/ DO-160
Typ. Weight, LBS (KG)	: 50.00 (22.68)

### MECHANICAL



### SCHEMATIC



TYPICAL TOLERANCE: +/-0.02 (0.50)

[www.radiuspower.com](http://www.radiuspower.com)  
[www.astrodyne.com](http://www.astrodyne.com)

Email: [Emifilters@astrodyne.com](mailto:Emifilters@astrodyne.com)

Reference purposes only.  
Specifications are subject to change.  
Consult factory to verify specifications.