

**RPTC2010-30**

**TEMPEST/COTS AC 1PH EMI Power Line Filter**

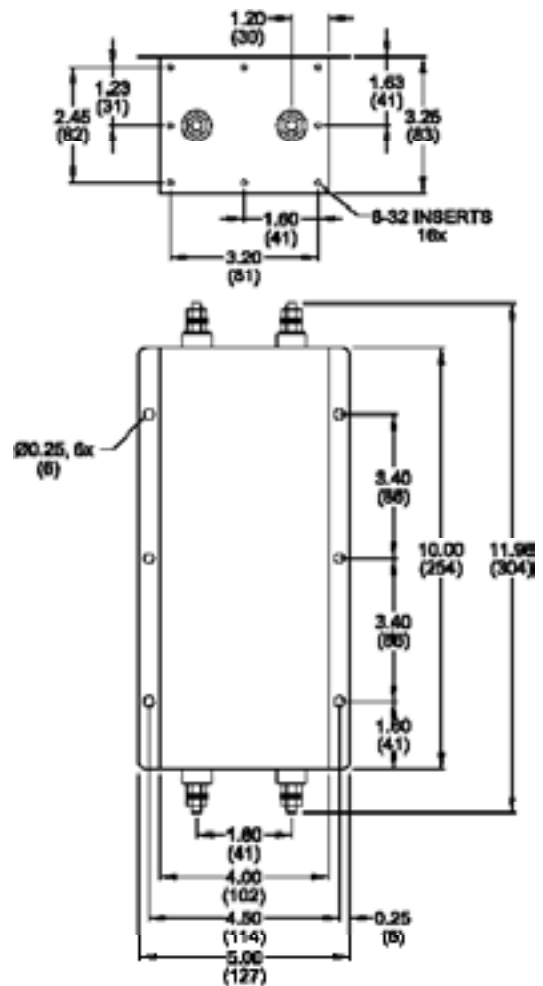
**RPTC2010-30  
TEMPEST/ COTS  
30A, 100dB  
14K - 10GHz**



### SPECIFICATIONS

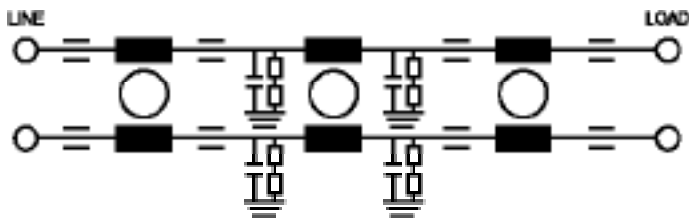
Operating Freq.	: 47-63Hz
Max. Operating Voltage	: 300VAC
Ambient Temperature	: -40 to 70C
Hipot Rating (L-G)	: 1500VDC
Terminals (-T)	: S: 1/4-20
Applications	: TEMPEST/Mil-461/ DO-160
Typ. Weight, LBS (KG)	: 7.0 (3.2)

### MECHANICAL



TYPICAL TOLERANCE: +/-0.02 (0.50)

### SCHEMATIC



Reference purposes only.  
Specifications are subject to change.  
Consult factory to verify specifications.