

RPTC2004-100

TEMPEST/COTS AC 3PH, WYE EMI Power Line Filter

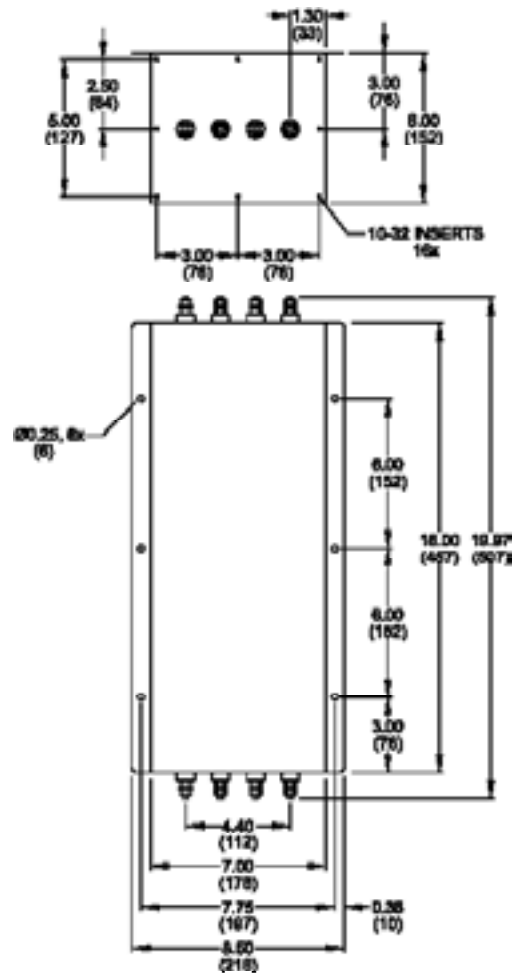
**RPTC2004-100
TEMPEST/ COTS
3 PHASE, 100A, 480V
100dB
14K -10GHz**



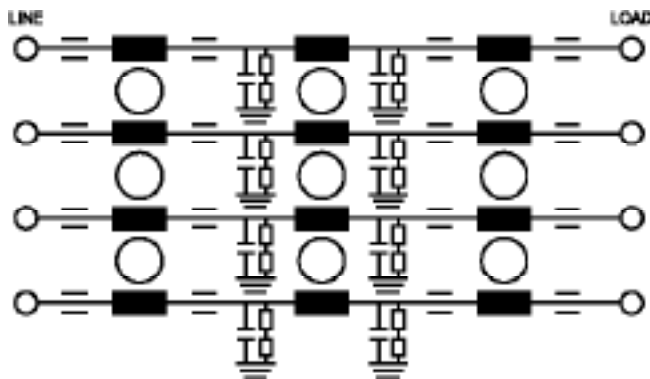
SPECIFICATIONS

Operating Freq.	: 47-63Hz
Max. Operating Voltage	: 480VAC
Ambient Temperature	: -40 to 70C
Hipot Rating (L-G)	: 1500VDC
Terminals (-T)	: S: 1/4-20
Applications	: TEMPEST/Mil-461/ DO-160
Typ. Weight, LBS (KG)	: 50.00 (22.68)

MECHANICAL



SCHEMATIC



TYPICAL TOLERANCE: +/-0.02 (0.50)

www.radiuspower.com
www.astrodyne.com

Email: Emifilters@astrodyne.com

Reference purposes only.
Specifications are subject to change.
Consult factory to verify specifications.