

RPTC2003-60

TEMPEST/COTS AC 1PH EMI Power Line Filter

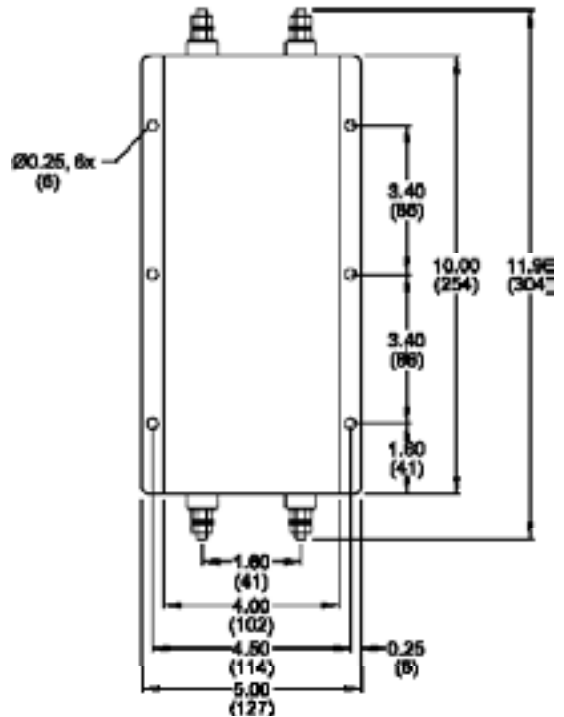
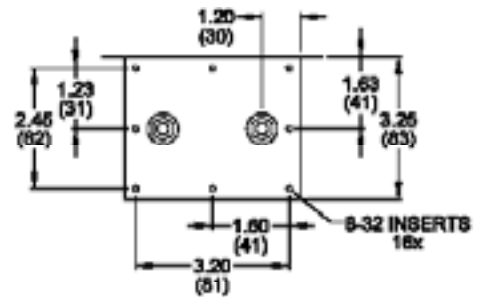
RPTC2003-60
TEMPEST/ COTS
60A, 100dB
14K - 10GHz



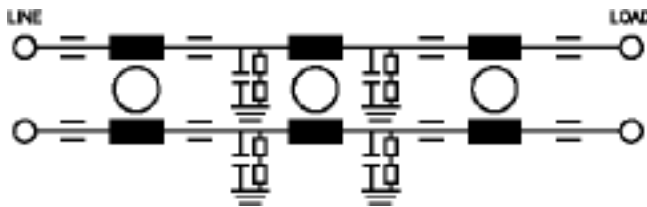
SPECIFICATIONS

Operating Freq.	: 47-63Hz
Max. Operating Voltage	: 300VAC
Ambient Temperature	: -40 to 70C
Hipot Rating (L-G)	: 1500VDC
Terminals (-T)	: S: 1/4-20
Applications	: TEMPEST/Mil-461/ DO-160
Typ. Weight, LBS (KG)	: 7.0 (3.2)

MECHANICAL



SCHEMATIC



TYPICAL TOLERANCE: +/-0.02 (0.50)

www.radiuspower.com
www.astrodyne.com

Email: Emifilters@astrodyne.com

Reference purposes only.
 Specifications are subject to change.
 Consult factory to verify specifications.