

**RPTC2002-10**

**TEMPEST/COTS AC 1PH EMI Power Line Filter**

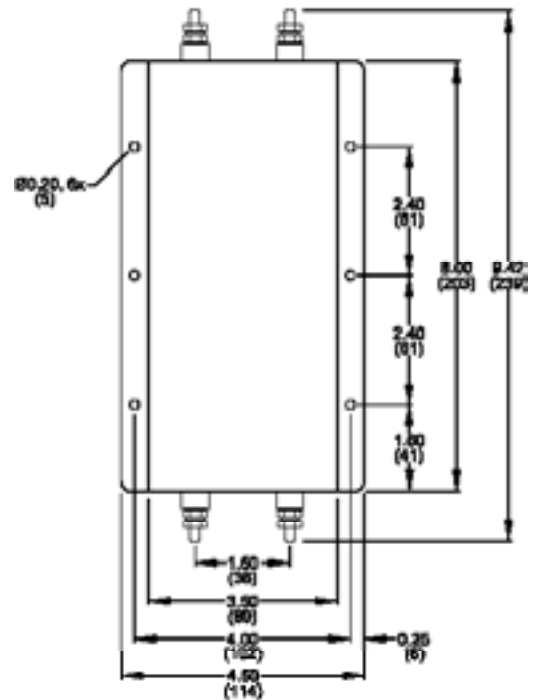
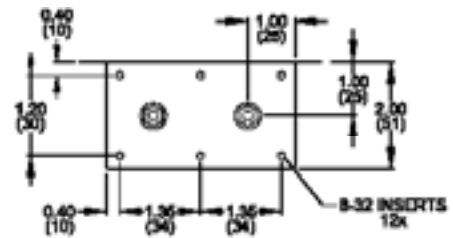
**RPTC2002-10  
TEMPEST/ COTS  
10A, 100dB  
14K - 10GHz**



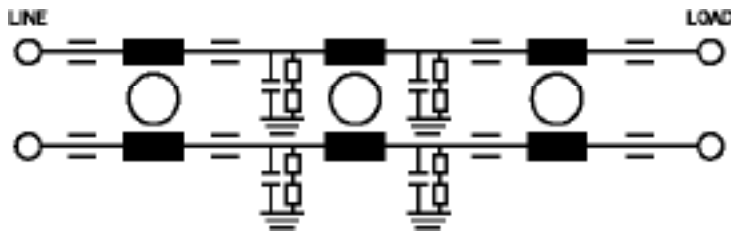
### SPECIFICATIONS

Operating Freq.	: 47-63HZ
Max. Operating Voltage	: 300VAC
Ambient Temperature	: -40 to 70C
Hipot Rating (L-G)	: 1500VDC
Terminals (-T)	: S: 10-32
Applications	: TEMPEST/Mil-461/ DO-160
Typ. Weight, LBS (KG)	: 3.0 (1.4)

### MECHANICAL



### SCHEMATIC



TYPICAL TOLERANCE: +/-0.02 (0.50)

Reference purposes only.  
Specifications are subject to change.  
Consult factory to verify specifications.

[www.radiuspower.com](http://www.radiuspower.com)  
[www.astrodyne.com](http://www.astrodyne.com)

Email: [Emifiltercs@astrodyne.com](mailto:Emifiltercs@astrodyne.com)