

**RPT5510 Series**

**TEMPEST/COTS AC EMI Power Line Filter**

**RPT5510  
TEMPEST/ COTS TO 25A  
PERFORMANCE TO 10GHZ  
70dB**



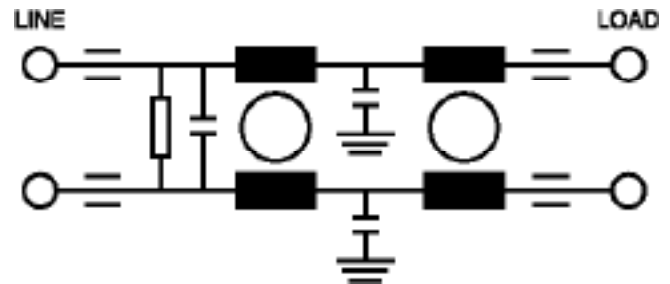
**SPECIFICATIONS**

Operating Freq.	: 50/60/400Hz
Max. Operating Voltage	: 300VAC
Ambient Temperature	: -40 to70C
Hipot Rating (L-G)	: 1500VDC
Terminals (-T)	: S: M5
Applications	: TEMPEST/Mil-461/ DO-160
Leakage Current	: 3.5mA/ Line (250V/60Hz)

**Note:**

Call for other termination types (e.g. Circular Mil Connectors, etc.)  
Leakage current is directly related to the line-ground caps in the filter. If higher leakage current is allowed, the caps can be increased to improve the low frequency insertion loss

**SCHEMATIC**



**PART NUMBER/ ORDERING**

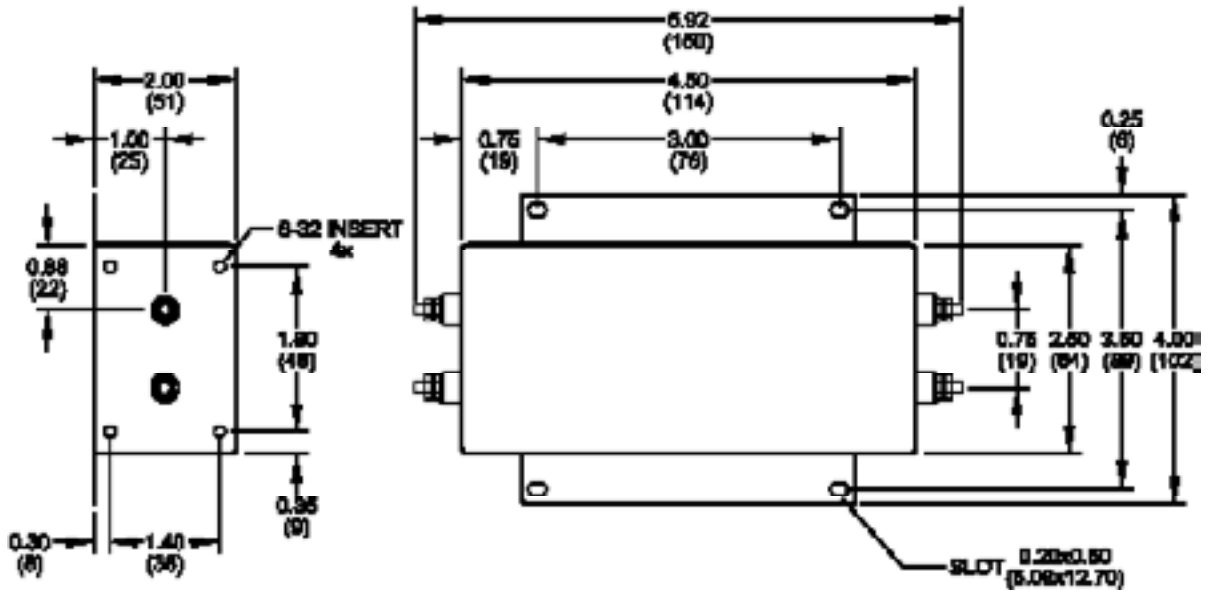
RPT5510	-X (Amps)	-T	Weight LBS (KG) Typ.
	5	S	1.4 (0.6)
	10		1.4 (0.6)
	15		1.8 (0.8)
	25		2.2 (1.0)

**Typical CM Insertion Loss, 50ohm**

14KHz	10dB
100KHz	40dB
500KHz	60dB
1MHz-10GHz	70dB

Reference purposes only.  
Specifications are subject to change.  
Consult factory to verify specifications.

**RPT5510**  
**Mechanical Dimensions**



TYPICAL TOLERANCE: +/-0.02 (0.50)

Reference purposes only.  
 Specifications are subject to change.  
 Consult factory to verify specifications.