

**RPM7050 Series**

**MIL/COTS AC, 1PH, 1U Height EMI Power Line Filter**

**RPM7050  
MILITARY/ COTS TO 30A  
MIL-STD-461/ DO-160  
1U HEIGHT**



**SPECIFICATIONS**

Operating Freq.	:	50/60/400Hz
Max. Operating Voltage	:	300VAC
Ambient Temperature	:	-40 to 70C
Hipot Rating (L-G)	:	1800VDC
Terminals (-T)	:	S: M5 Studs
Typical Leakage Current	:	3.5mA/Line (250V/60Hz)
Applications	:	Mil-461/ DO-160
Typ. Weight, LBS (KG)	:	1.5 (0.7)
Note:		
* Call for other termination types (e.g. Circular Mil-Connectors, etc.)		
*Leakage Current is determined by the line to ground capacitors in the filter. The capacitors can be easily varied to match the system leakage requirements.		

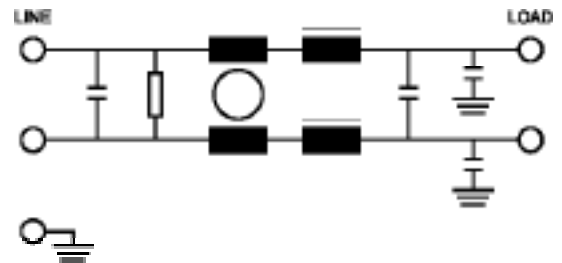
**TYPICAL INSERTION LOSS, dB  
(50/50ohm)**

FREQ (MHz)	.01	.15	.5	1	10	30
CM(dB)	16	32	50	50	45	30
DM(dB)	22	42	60	60	40	30

**PART NUMBER/ ORDERING**

RPM7050	-X (Amps)	-T
	5	S
	10	
	20	
	30	

**SCHEMATIC**

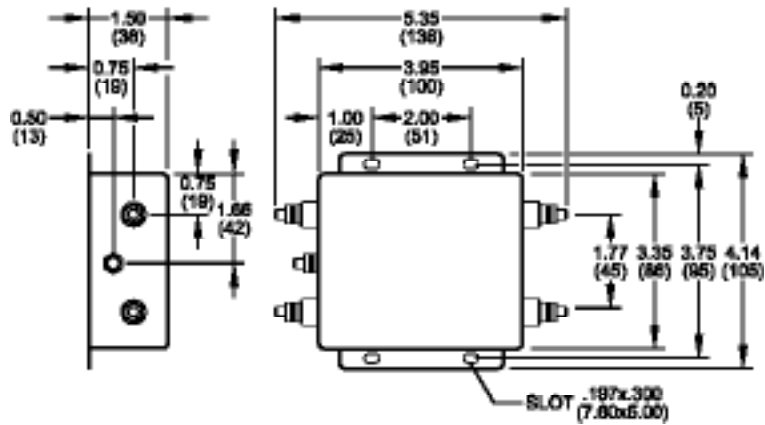


Reference purposes only.  
Specifications are subject to change.  
Consult factory to verify specifications.

## RPM7050

### Mechanical Dimensions

5/10/20/30Amp



TYPICAL TOLERANCE: +/-0.02 (0.50)

Reference purposes only.  
 Specifications are subject to change.  
 Consult factory to verify specifications.