

RPM6600 Series

MIL/COTS DC EMI Power Line Filter

**RPM6600
MILITARY/ COTS TO 50A
PERFORMANCE TO 10GHZ
MIL-STD-461/ DO-160**



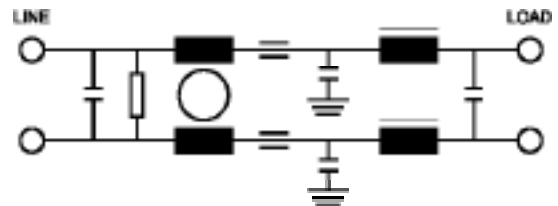
SPECIFICATIONS

Operating Freq.	: DC
Max. Operating Voltage	: 400VDC
Ambient Temperature	: -40 to 70C
Hipot Rating (L-G)	: 1800VDC
Terminals (-T)	: S: M5 Studs
Applications	: Mil-461/ DO-160 (Ungrounded returns)
Call for other termination types (e.g. Circular Mil-Connectors, etc.)	

**TYPICAL INSERTION LOSS, dB
(50/50ohm)**

FREQ (MHz)	.01	.15	.5	1	10	1000	10000
CM(dB)	40	50	60	60	70	70	70
DM(dB)	28	45	60	60	60	-	-

SCHEMATIC



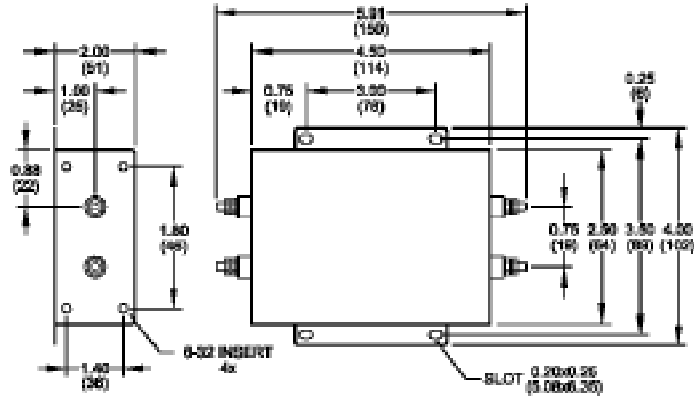
PART NUMBER/ ORDERING

RPM6600	-X (Amps)	-T	Weight LBS (KG) Typ.
	5	S	1.4 (0.6)
	10		1.4 (0.6)
	25		1.8 (0.8)
	50		2.2 (1.0)

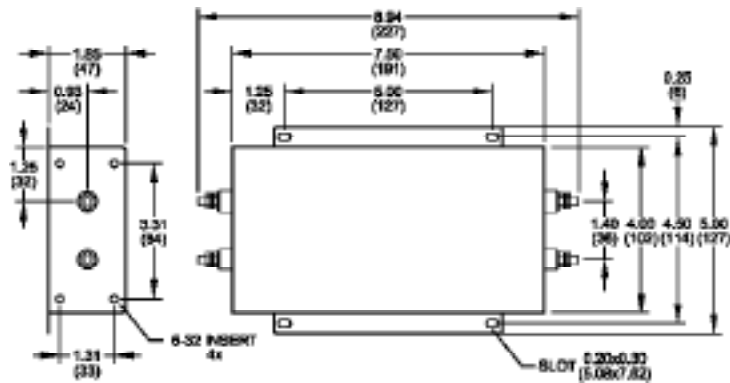
Reference purposes only.
Specifications are subject to change.
Consult factory to verify specifications.

RPM6600 Mechanical Dimensions

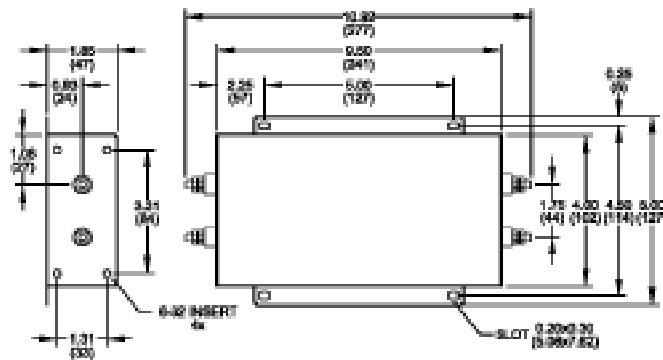
5/10Amp



25Amp



50Amp



TYPICAL TOLERANCE: +/-0.02 (0.50)

Reference purposes only.
Specifications are subject to change.
Consult factory to verify specifications.