



**RPC1299-30**

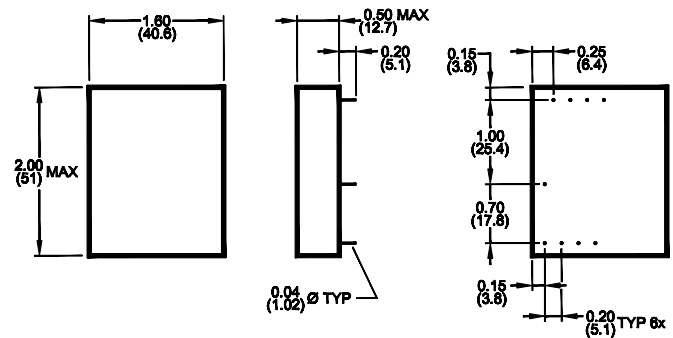
**30 Amp Dual Stage PCB DC Power Line Filter**

**RPC1299-30  
HIGH CURRENT/HIGH  
PERFORMANCE COMPACT PCB DC  
FILTER FOR -48VDC  
TELECOM/DC-DC  
CONVERTERS AND RELATED  
APPLICATIONS**

**ROHS COMPLIANT**



**MECHANICAL**



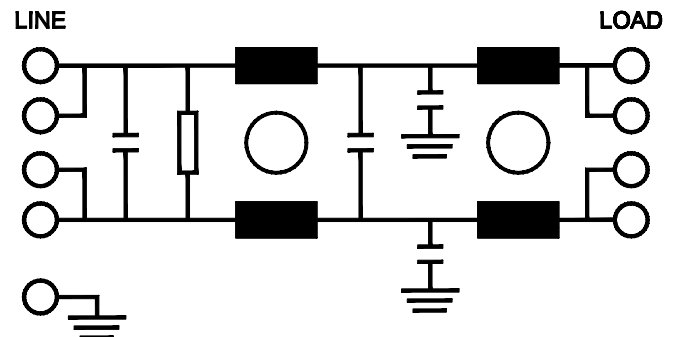
TYPICAL TOLERANCE: +/-0.02 (0.50)

**SPECIFICATIONS**

Operating Freq.	: DC
Max. Operating Voltage	: 75VDC
Operating Current	: 30ADC
Case Temperature	: -40C to 100C
Storage Temperature	: -55C to 125C
DC Resistance/Line	1.25mohm Typ
Hipot Rating (L-G)	: 2500VDC
Safety Approvals	: cURus(6950)/EN60950
Typ. Weight, LBS (KG)	0.2 (0.1)

\*Note: Not recommended for high pressure cleaning environment.

**SCHEMATIC**



**TYPICAL INSERTION LOSS, dB  
(50/50ohm)**

FREQ (MHz)	.15	.5	1.0	10	30
CM(dB)	12	30	42	55	45
DM(dB)	10	32	44	50	60

[www.radiuspower.com](http://www.radiuspower.com)

Reference purposes only.  
Specifications are subject to change.  
Consult factory to verify specifications.

Engineering Assistance: [engg@radiuspower.com](mailto:engg@radiuspower.com)  
Sales: [sales@radiuspower.com](mailto:sales@radiuspower.com)