

RPC1199

Single Stage, GND Choke Power Line Filter

RPC1199 SINGLE STAGE AT 20A & 30A GROUND CHOKE FILTER

ROHS COMPLIANT

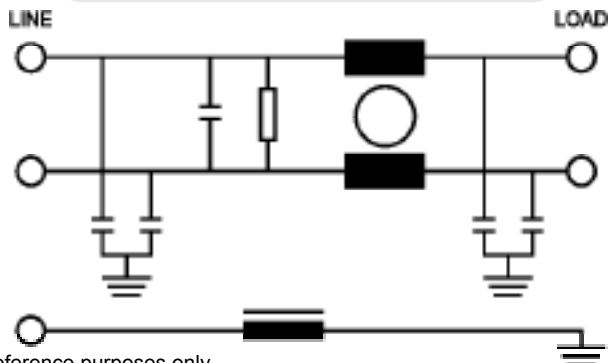
SPECIFICATIONS

Operating Freq.	: 50/60Hz
Usable Freq.	: DC - 400Hz
Max. Operating Voltage	: 250V +10%
Ambient Temperature	: -25 to 50C
Climatic Category	: 25/100/21
Hipot Rating (L-G)	: 2700VDC
Leakage Current	: 1.8mA (250V/60Hz)
Terminals	: 10-32 Studs
Safety Approvals	: CSA, UR, EN60939
Part Numbering	
RPC1199-20	: 20A
RPC1199-30	: 30A
Typ. Weight, LBS (KG)	: 0.8 (0.4)

TYPICAL INSERTION LOSS, dB (50/50ohm)

FREQ (MHz)	.15	.5	1.0	10	30
CM(dB)	32	50	60	42	30
DM(dB)	45	60	60	40	30

SCHEMATIC

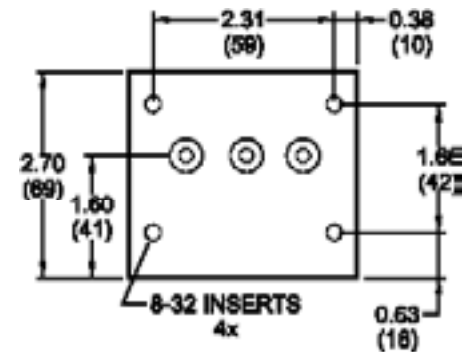


Reference purposes only.
Specifications are subject to change.
Consult factory to verify specifications.

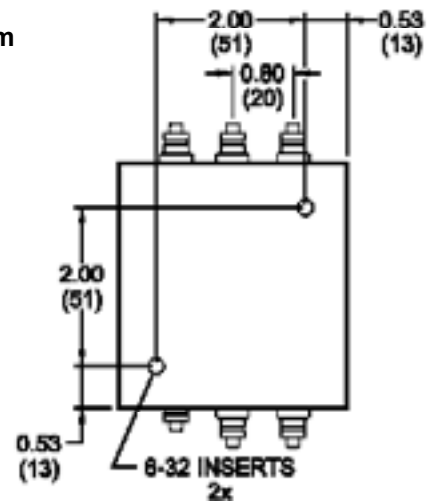


MECHANICALS

Front Face (Line)



Bottom View



TYPICAL TOLERANCE: +/-0.02 (0.50)

www.radiuspower.com
www.astrodyne.com

Email: Emifiltercs@astrodyne.com