

## RPC1197

## Dual Stage, WYE 480V 1U Power Line Filter

**RPC1197  
DUAL STAGE 20 TO 30A  
WYE, 480V, 1U**

**ROHS COMPLIANT**

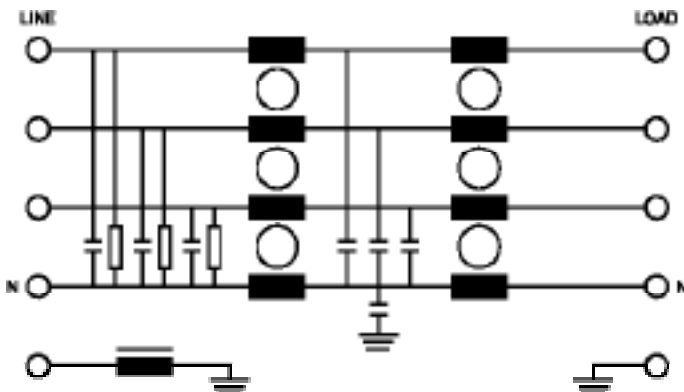
### SPECIFICATIONS

Operating Freq.	: 50/60Hz
Usable Freq.	: DC - 400Hz
Max. Operating Voltage	: 480VAC
Ambient Temperature	: -25 to 50C
Climatic Class	: 25/100/21
Hipot Rating (L-G)	: 3500VDC
Terminals	: 10-32 Studs
Safety Approvals	: UR, CSA, EN60939
Part Numbering	
RPC1197-20	: 20A
RPC1197-30	: 30A
Typ. Weight, LBS (KG)	: 3.5 (1.6)

### TYPICAL INSERTION LOSS, dB (50/50ohm)

FREQ (MHz)	.15	.5	1.0	10	30
CM(dB)	32	50	60	42	30
DM(dB)	45	60	60	40	30

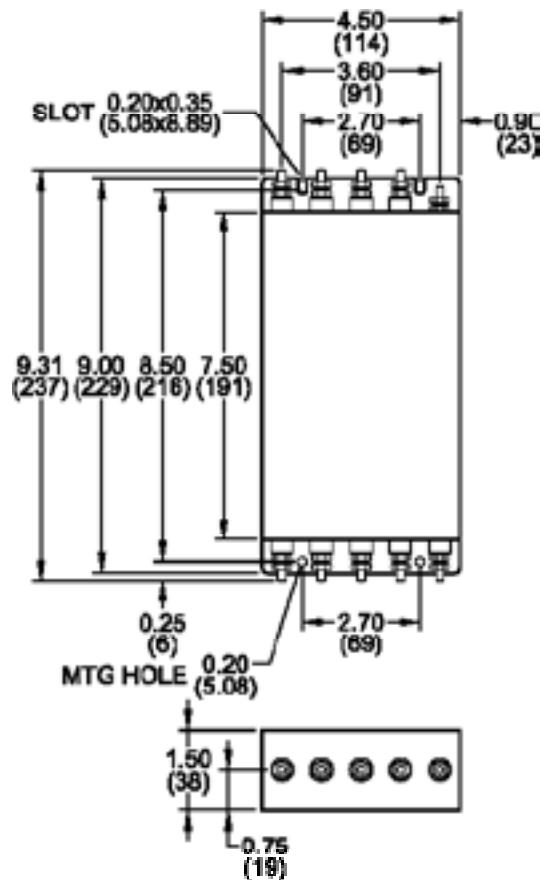
### SCHEMATIC



Reference purposes only.  
Specifications are subject to change.  
Consult factory to verify specifications.



### MECHANICAL



TYPICAL TOLERANCE: +/-0.02 (0.50)

[www.radiuspower.com](http://www.radiuspower.com)  
[www.astrodyne.com](http://www.astrodyne.com)

Email: [Emifiltercs@astrodyne.com](mailto:Emifiltercs@astrodyne.com)