

RP225 Series

High Performance Dual Stage Power Line Filter

RP225 DUAL STAGE TO 20A CHASSIS MOUNT FILTER

ROHS COMPLIANT



SPECIFICATIONS

Operating Freq.	: 50/60Hz
Usable Freq.	: DC - 400Hz
Max. Operating Voltage	: 300V +10%
Ambient Temperature	: -25 to 40C
Climatic Category	: 25/100/21
Hipot Rating (L-G)	: 2700VDC
Terminals (-T)	: QD: 0.25 Tabs
Safety Approvals	: CSA, UR, EN60939

LEAKAGE CURRENT

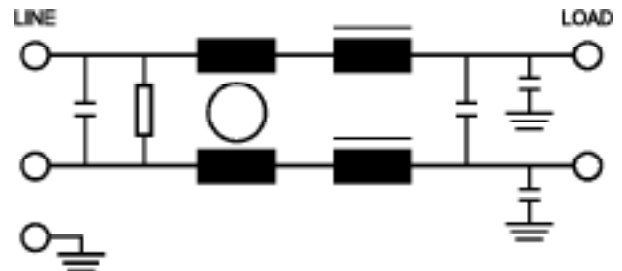
Y-cap, nF	mA, 120V/60Hz	mA, 250V/60Hz
0	0	0
.47	.042	0.08
1	.09	0.18
2.2	.2	0.4
4.7	.42	0.8
10	.9	1.8

PART NUMBER/ ORDERING

RP225	-X (Amps)	-Y (Ycap, nF)	-T	Weight LBS (KG) Typ.
	3	0	QD	0.8 (0.4)
	4	.47		0.8 (0.4)
	6	1		0.8 (0.4)
	10	2.2		0.8 (0.4)
	12	4.7		0.8 (0.4)
	20	10		1.4 (0.6)

Note: Use any combination of -Y with any -X (Amps) rating
e.g. RP225-20-10-QD (20Amps with 10nF Ycap)

SCHEMATIC



RP225

Typical Insertion Loss, dB (50/50ohm)

Mechanical Dimensions

3 Amp					
FREQ (MHz)	.15	.5	1.0	10	30
CM(dB)	14	28	30	65	65
DM(dB)	26	65	65	55	36

4 Amp					
FREQ (MHz)	.15	.5	1.0	10	30
CM(dB)	48	50	50	45	45
DM(dB)	65	75	75	65	60

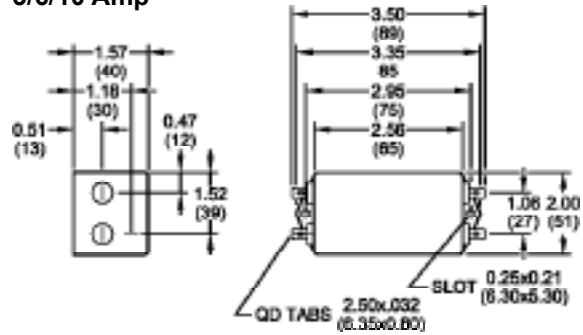
6 Amp					
FREQ (MHz)	.15	.5	1.0	10	30
CM(dB)	19	32	36	65	50
DM(dB)	30	65	65	55	40

10 Amp					
FREQ (MHz)	.15	.5	1.0	10	30
CM(dB)	20	30	34	65	50
DM(dB)	26	65	65	52	45

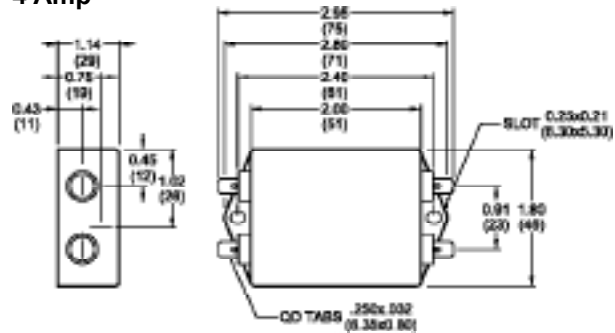
12 Amp					
FREQ (MHz)	.15	.5	1.0	10	30
CM(dB)	22	35	40	65	50
DM(dB)	33	65	65	55	40

20 Amp					
FREQ (MHz)	.15	.5	1.0	10	30
CM(dB)	20	32	65	65	50
DM(dB)	26	65	65	50	45

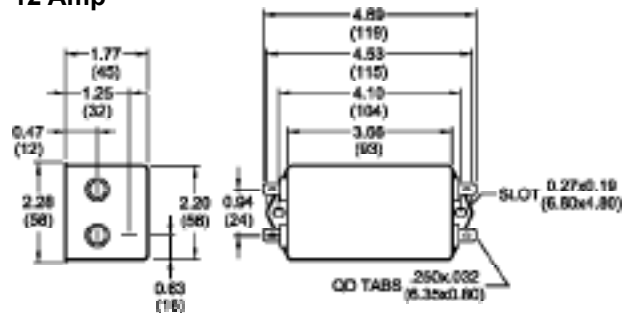
3/6/10 Amp



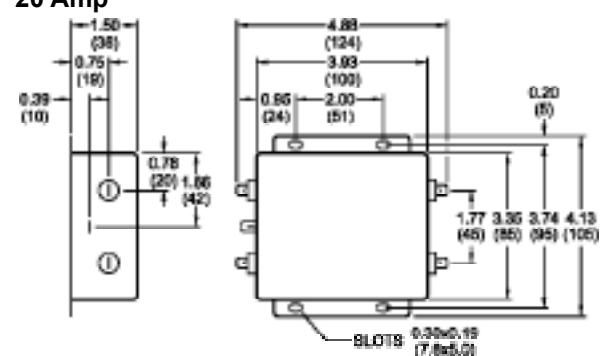
4 Amp



12 Amp



20 Amp



TYPICAL TOLERANCE: +/-0.02 (0.50)

Reference purposes only.
 Specifications are subject to change.
 Consult factory to verify specifications.

www.radiuspower.com
www.astrodyne.com