



## RP190 Series

## Compact PCB Single Stage Power Line Filter

### RP190 COMPACT 10A PCB FILTER

ROHS COMPLIANT



### SPECIFICATIONS

Operation Freq.	: DC - 60Hz
Operation Voltage	: 250V +10%
Ambient Temperature	: 40C
Inrush Rating	: 20x(10ms), 1.5x(MIN)
Climate Category	: 25/100/21
Hipot Rating	: 2500VDC (P/N-E)
Terminals	: 17.5x15mm
Safety Approvals	: UR/cURus/EN60393

### LEAKAGE CURRENT

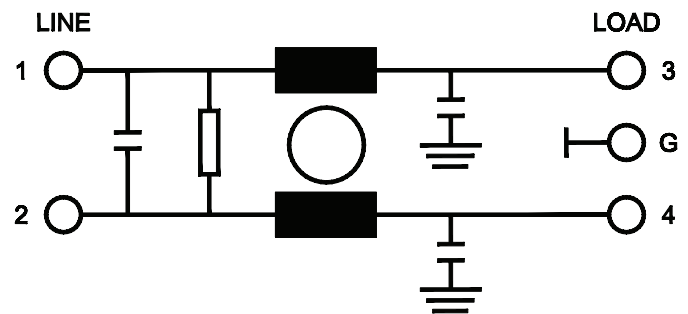
Y-cap, nF	mA, 120V/60Hz	mA, 250V/50Hz
0	0	0
.22	.02	.035
.47	.042	.074
1	.09	.15
2.2	.2	.35
3.3	.3	.52
4.7	.42	.74

### PART NUMBER/ ORDERING

RP190	-X (Amps)	-Y (Ycap, nF)
	1	0
	3	.22
	6	.47
	10	1
		2.2
		3.3
		4.7

**Note:** Use any combination of -Y with any -X (Amps) rating  
e.g. RP190-1-1  
1Amps with 1nF Ycap

### SCHEMATIC



Reference purposes only.  
Specifications are subject to change.  
Consult factory to verify specifications.

[www.radiuspower.com](http://www.radiuspower.com)  
[www.astrodyne.com](http://www.astrodyne.com)

Email: [Emifiltercs@astrodyne.com](mailto:Emifiltercs@astrodyne.com)

## RP190 Typical Insertion Loss, 50/50ohm

## Mechanical Dimensions

### 1 Amp

FREQ (MHz)	.15	.5	1.0	10	30
CM(dB)	46	55	55	55	40
DM(dB)	10	24	50	50	44

### 3 Amp

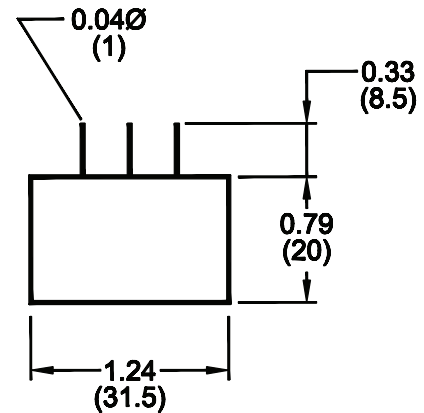
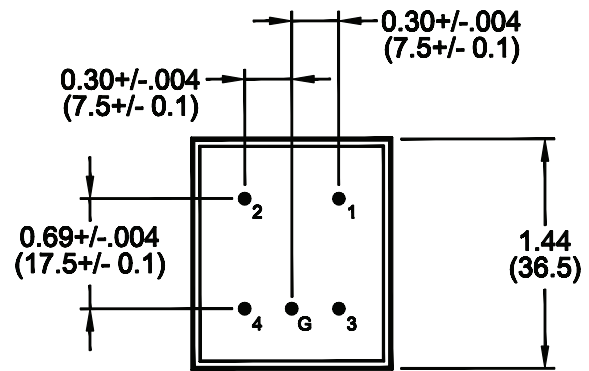
FREQ (MHz)	.15	.5	1.0	10	30
CM(dB)	30	40	55	55	44
DM(dB)	10	20	30	50	44

### 6 Amp

FREQ (MHz)	.15	.5	1.0	10	30
CM(dB)	22	35	45	55	46
DM(dB)	10	20	26	50	44

### 10 Amp

FREQ (MHz)	.15	.5	1.0	10	30
CM(dB)	10	20	26	50	42
DM(dB)	10	18	22	42	42



Reference purposes only.  
Specifications are subject to change.  
Consult factory to verify specifications.