



RP135 Series - Medical Grade High Performance Single Stage Power Line Filter

**RP135
MEDICAL GRADE TO 200A
CHASSIS MOUNT FILTER**

ROHS COMPLIANT

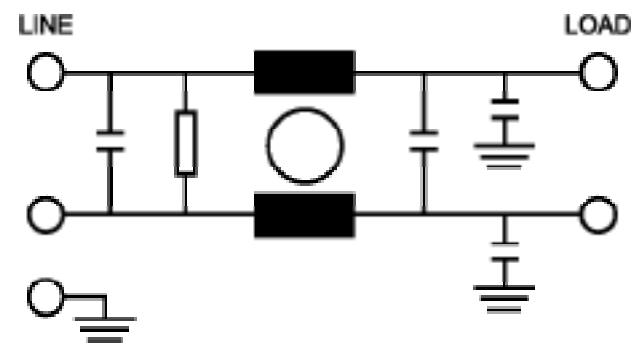


SPECIFICATIONS	
Operating Freq.	: 50/60Hz
Usable Freq.	: DC - 400Hz
Max. Operating Voltage	: 250V +10%
Ambient Temperature	: -25 to 40C
Climatic Category	: 25/100/21
Hipot Rating (L-G)	: 2700VDC
Terminals (-T)	: QD: 0.25 Tab (1-20A) S: 30A (M4) 60-100A (M6) 150-200A (M10)
Safety Approvals	: CSA, UR, EN60939

LEAKAGE CURRENT		
Y-cap, nF	mA, 120V/60Hz	mA, 250V/60Hz
0	0	0
.22	0.02	0.04
.47	0.04	0.08
1	0.09	0.18

PART NUMBER/ ORDERING				
RP135	-X (Amps)	-Y (Ycap, nF)	-T	Weight LBS (KG) Typ.
	1	0	QD	0.1 (0.04)
	3	.22		0.1 (0.04)
	6	.47		0.1 (0.04)
	10	1		0.1 (0.04)
	16			0.5 (0.2)
	20			0.5 (0.2)
	30		S	0.5 (0.2)
	60			2.8 (1.3)
	100			6.0 (2.7)
	150			6.0 (2.7)
	180			6.0 (2.7)
	200			6.0 (2.7)

SCHEMATIC



Note: Use any combination of -Y with any -X (Amps) rating
e.g. RP135-100-1-S (100 Amps with 1nF Ycap)

Reference purposes only.
Specifications are subject to change.
Consult factory to verify specifications.

www.radiuspower.com
www.astrodyne.com

Email: Emifiltercs@astrodyne.com



RP135

Typical Insertion Loss, dB (50/50ohm)

Mechanical Dimensions

1 Amp					
FREQ (MHz)	.15	.5	1.0	10	30
CM(dB)	40	50	50	45	40
DM(dB)	15	26	45	50	50

3 Amp					
FREQ (MHz)	.15	.5	1.0	10	30
CM(dB)	30	42	50	55	35
DM(dB)	18	30	40	55	50

6 Amp					
FREQ (MHz)	.15	.5	1.0	10	30
CM(dB)	20	30	36	55	40
DM(dB)	15	26	32	55	40

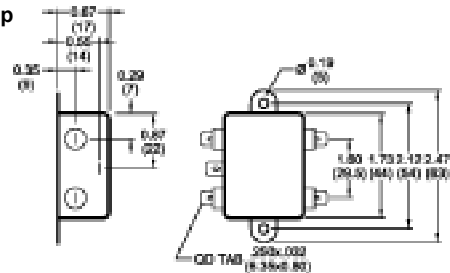
10/16 Amp					
FREQ (MHz)	.15	.5	1.0	10	30
CM(dB)	18	25	40	55	45
DM(dB)	15	25	40	65	50

20 Amp					
FREQ (MHz)	.15	.5	1.0	10	30
CM(dB)	24	38	45	50	50
DM(dB)	42	60	65	60	50

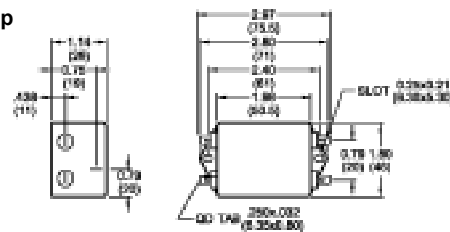
30/60 Amp					
FREQ (MHz)	.15	.5	1.0	10	30
CM(dB)	20	30	40	45	50
DM(dB)	38	70	70	55	60

100/150/180/200 Amp					
FREQ (MHz)	.15	.5	1.0	10	30
CM(dB)	20	30	40	45	50
DM(dB)	40	60	65	70	65

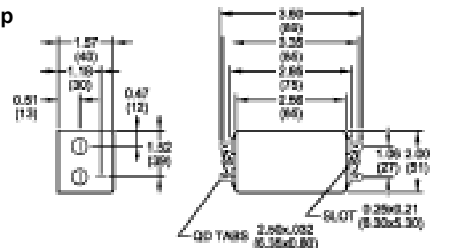
1/3/6/10 Amp



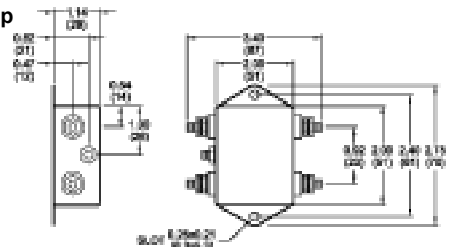
16 Amp



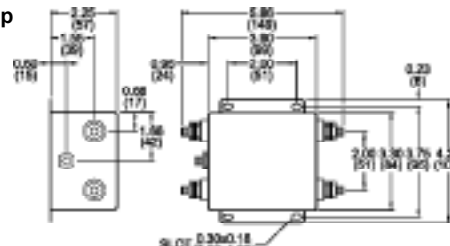
20 Amp



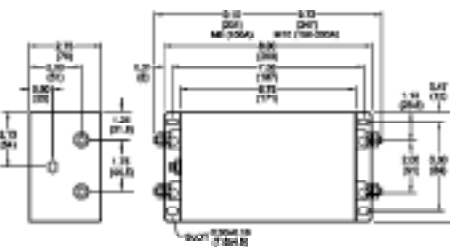
30 Amp



60 Amp



100/150/180/200 Amp



TYPICAL TOLERANCE: +/-0.02 (0.50)

www.radiuspower.com
www.astrodyne.com

Email: Emifiltercs@astrodyne.com

Reference purposes only.
Specifications are subject to change.
Consult factory to verify specifications.