

## RP120 Series

## Medium - High Performance Single Stage Power Line Filter

### RP120 HIGH PERFORMANCE TO 50A CHASSIS MOUNT FILTER

ROHS COMPLIANT



#### SPECIFICATIONS

Operating Freq.	: 50/60Hz
Usable Freq.	: DC - 400Hz
Max. Operating Voltage	: 300V +10%
Ambient Temperature	: -25 to 40C
Climatic Category	: 25/100/21
Hipot Rating (L-G)	: 2700VDC
Terminals (-T)	: QD: 0.25 Tab (10-20A) S: 30/40A (M4) 50A (M5)
Safety Approvals	: cURus, EN60939

#### LEAKAGE CURRENT

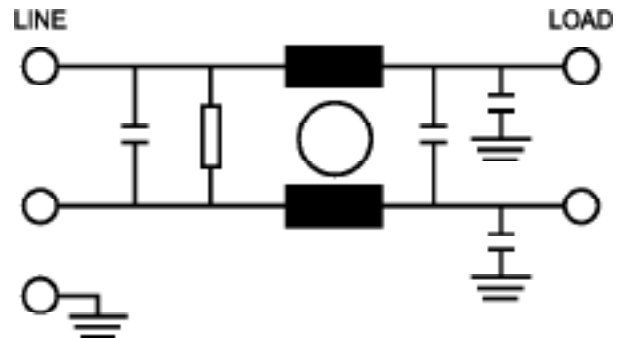
Y-cap, nF	mA, 120V/60Hz	mA, 250V/60Hz
0	0	0
.47	0.04	0.08
1	0.09	0.18
2.2	0.2	0.4
4.7	0.4	0.8
10	0.9	1.8
22	2	4
100	9	18

#### PART NUMBER/ ORDERING

RP120	-X (Amps)	-Y (Ycap, nF)	-T	Weight LBS (KG) Typ.
	10	0	QD	0.4 (0.2)
	16	.47		0.4 (0.2)
	20	1		0.4 (0.2)
	30	2.2	S	1.0 (0.5)
	40	4.7		1.0 (0.5)
	50	10		1.0 (0.5)
		22		
		100		

**Note:** Use any combination of -Y with any -X (Amps) rating  
e.g. RP120-16-22-QD (16 Amps with 22nF Ycap)

#### SCHEMATIC



## RP120

### Typical Insertion Loss, dB (50/50ohm)

### Mechanical Dimensions

10 Amp					
FREQ (MHz)	.15	.5	1.0	10	30
CM(dB)	40	55	65	65	60
DM(dB)	50	70	70	75	70

16 Amp					
FREQ (MHz)	.15	.5	1.0	10	30
CM(dB)	34	50	60	60	55
DM(dB)	44	70	70	68	64

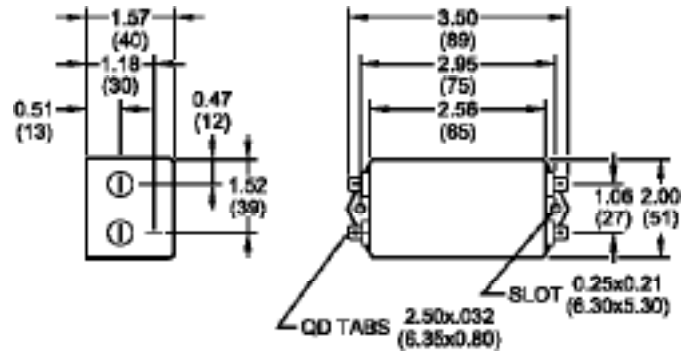
20 Amp					
FREQ (MHz)	.15	.5	1.0	10	30
CM(dB)	20	28	34	55	60
DM(dB)	34	60	60	60	60

30 Amp					
FREQ (MHz)	.15	.5	1.0	10	30
CM(dB)	15	34	30	55	55
DM(dB)	30	65	65	60	60

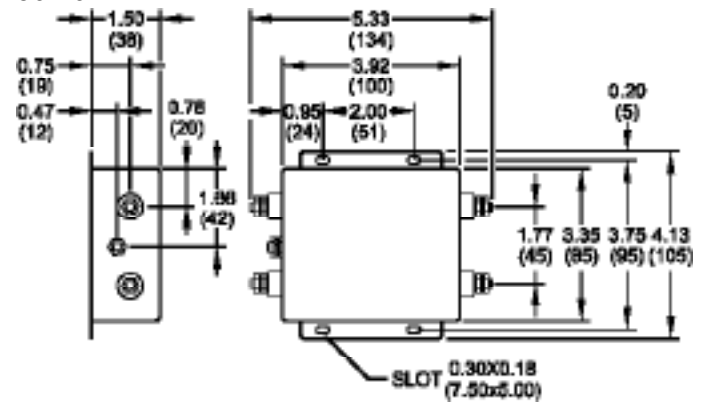
40 Amp					
FREQ (MHz)	.15	.5	1.0	10	30
CM(dB)	15	24	30	55	55
DM(dB)	30	65	65	60	60

50 Amp					
FREQ (MHz)	.15	.5	1.0	10	30
CM(dB)	24	32	50	60	55
DM(dB)	40	65	65	60	60

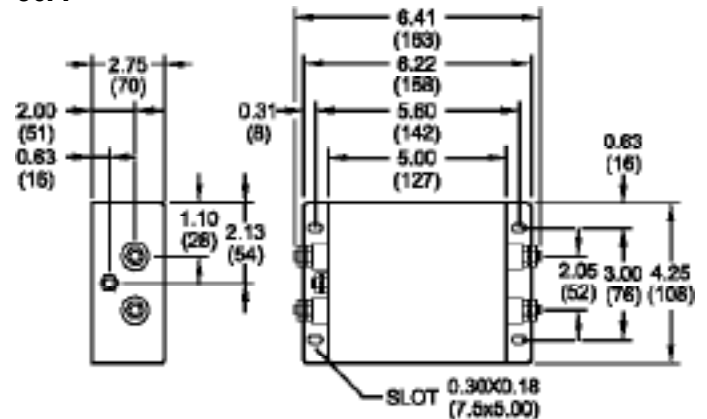
#### 10/16/20A



#### 30/40A



#### 50A



TYPICAL TOLERANCE: +/-0.02 (0.50)

Reference purposes only.  
Specifications are subject to change.  
Consult factory to verify specifications.

[www.radiuspower.com](http://www.radiuspower.com)  
[www.astrodyne.com](http://www.astrodyne.com)