

RP605 Series

High Current DC Power Line Filter

**RP605
100 TO 200A
CHASSIS MOUNT FILTER**

ROHS COMPLIANT



SPECIFICATIONS

Max. Operation Voltage	: 250VDC
Ambient Temperature	: -25 to 40C
Climatic Category	: 25/100/21
Hipot Rating (L-G)	: 2700VDC
Terminals (-T)	: S: 100A (M6) 150-200A (M10)
Safety Approvals	: CSA, UR, EN60939
Typ. Weight, LBS (KG)	: 6.0 (2.7)

**TYPICAL INSERTION LOSS, dB
(50/50ohm)**

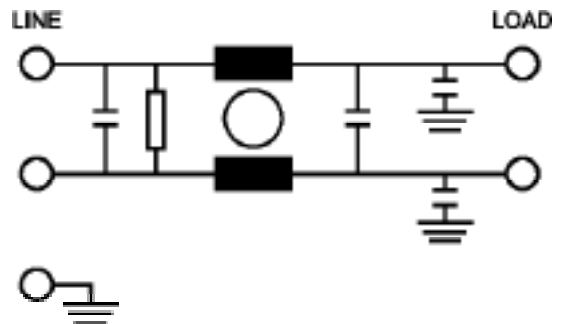
FREQ (MHz)	.15	.5	1.0	10	30
CM(dB)	16	28	36	45	50
DM(dB)	32	60	60	50	50

PART NUMBER/ ORDERING

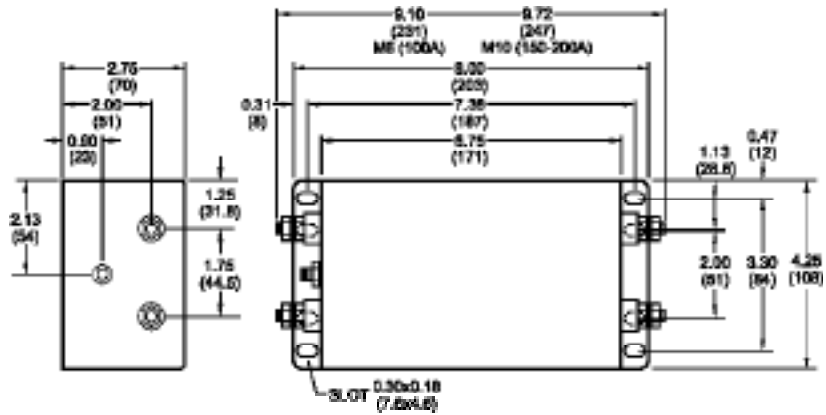
RP605	-X (Amps)	-Y (Ycap, nF)	-T
	100	10	S
	150	100	
	180		
	200		

Note: Use any combination of -Y with any -X (Amps) rating
e.g. RP605-100-10-S (100Amps with 10nF Ycap)

SCHEMATIC



RP605 Mechanical Dimensions



TYPICAL TOLERANCE: +/-0.02 (0.50)

Reference purposes only.
Specifications are subject to change.
Consult factory to verify specifications.