



RP186 Series

High Performance IEC Inlet Power Line Filter

RP186 HIGH PERFORMANCE TO 20A IEC INLET FILTER

ROHS COMPLIANT



SPECIFICATIONS

Operating Freq.	: 50/60Hz
Usable Freq.	: DC - 400Hz
Max. Operating Voltage	: 250V +10%
Ambient Temperature	: -25 to 80C
Climatic Category	: 25/100/21
Hipot Rating (L-G)	: 2121VDC
Terminals (-T)	: QD: 0.25 Tab (1-20A)
Safety Approvals	: cURus, EN60939

LEAKAGE CURRENT

Y-cap, nF	mA, 120V/60Hz	mA, 250V/60Hz
0	0	0
.47	0.04	0.08
1	0.09	0.18
2.2	0.2	0.4
4.7	0.4	0.8
10	0.9	1.8
22	2	4
47	4	8

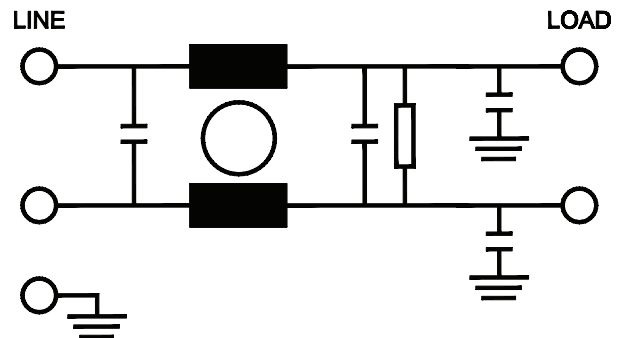
PART NUMBER/ ORDERING

RP186	-X (Amps)	-Y (Ycap, nF)	-T	Weight LBS (KG) Typ.
	1	0*	QD	
	3	.47		
	6	1		
	10	2.2		
	12	4.7		
	15	10		
	16	22		
	20	47		

Note: Use any combination of -Y with any -X (Amps) rating
e.g. RP186-16-22-QD (16 Amps with 22nF Ycap)

*RP186-16-0-QD (16 Amps with 0 Ycap) For Medical
Application with leakage current requirement of <2.0uA

SCHEMATIC



Reference purposes only.
Specifications are subject to change.
Consult factory to verify specifications.

www.radiuspower.com
www.astrodyne.com

Email: Emifiltercs@astrodyne.com



RP186

Typical Insertion Loss, dB (50/50ohm)

1Amp					
FREQ (MHz)	.15	.5	1.0	10	30
CM(dB)	46	35	30	30	45
DM(dB)	60	80	80	50	35

3 Amp					
FREQ (MHz)	.15	.5	1.0	10	30
CM(dB)	50	40	35	30	55
DM(dB)	45	70	80	50	40

6 Amp					
FREQ (MHz)	.15	.5	1.0	10	30
CM(dB)	40	45	40	40	60
DM(dB)	35	70	80	45	45

10 Amp					
FREQ (MHz)	.15	.5	1.0	10	30
CM(dB)	30	40	35	35	40
DM(dB)	25	60	70	45	35

12 Amp					
FREQ (MHz)	.15	.5	1.0	10	30
CM(dB)	25	40	40	46	40
DM(dB)	20	55	75	70	46

15 Amp					
FREQ (MHz)	.15	.5	1.0	10	30
CM(dB)	20	30	35	45	40
DM(dB)	20	50	70	65	60

16 Amp					
FREQ (MHz)	.15	.5	1.0	10	30
CM(dB)	30	45	45	65	40
DM(dB)	20	65	85	55	50

20 Amp					
FREQ (MHz)	.15	.5	1.0	10	30
CM(dB)	25	40	40	65	40
DM(dB)	20	65	85	60	55

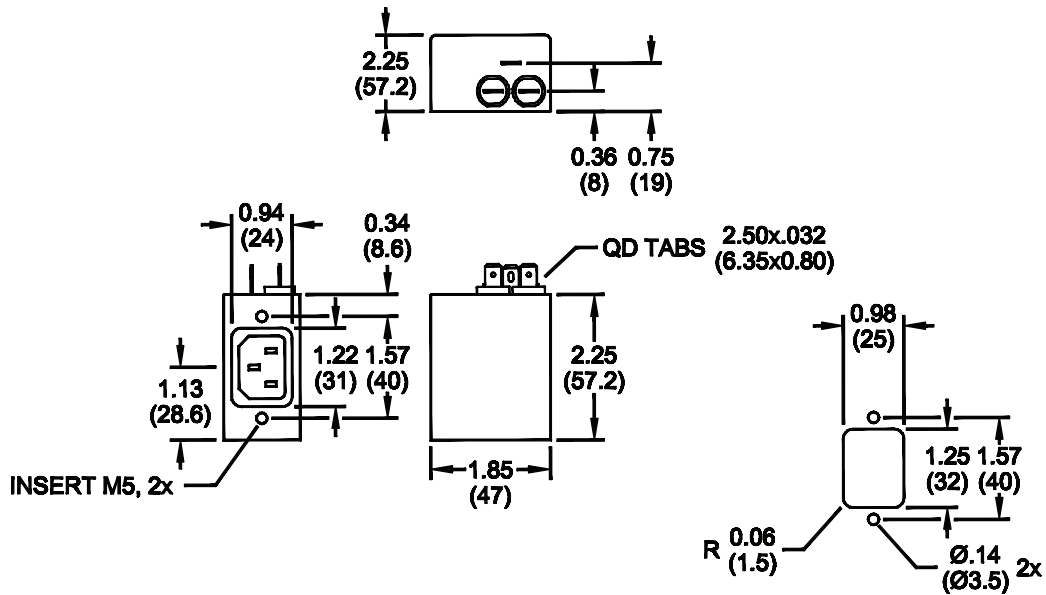
Reference purposes only.
 Specifications are subject to change.
 Consult factory to verify specifications.

www.radiuspower.com
www.astrodyne.com

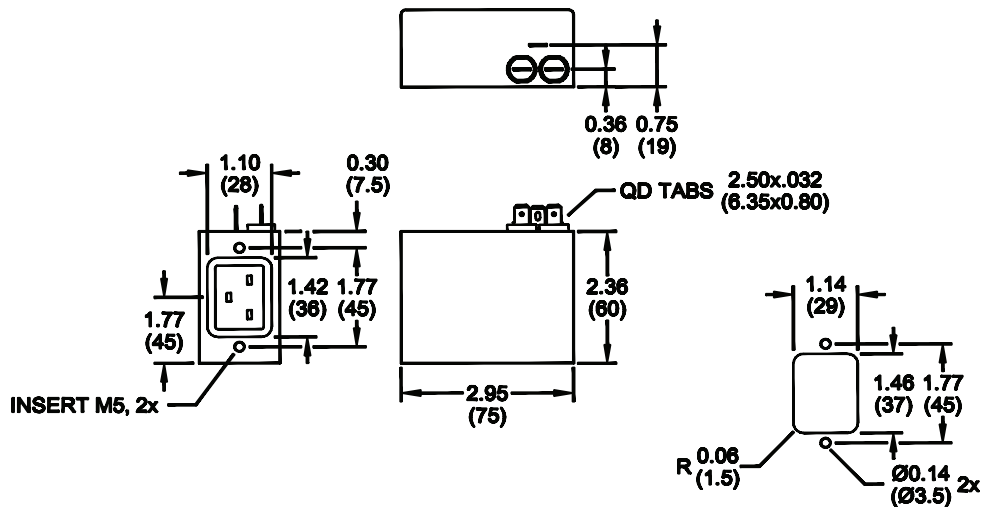
Email: Emifiltercs@astrodyne.com

RP186 Mechanical Dimensions

1/3/6/10/12/15A



16/20A



TYPICAL TOLERANCE: +/-0.02 (0.50)

Reference purposes only.
Specifications are subject to change.
Consult factory to verify specifications.