

## RPC1158-50

## Compact Single Stage Power Line Filter

### RPC1158-50 SINGLE STAGE 50A AC/DC APPLICATION

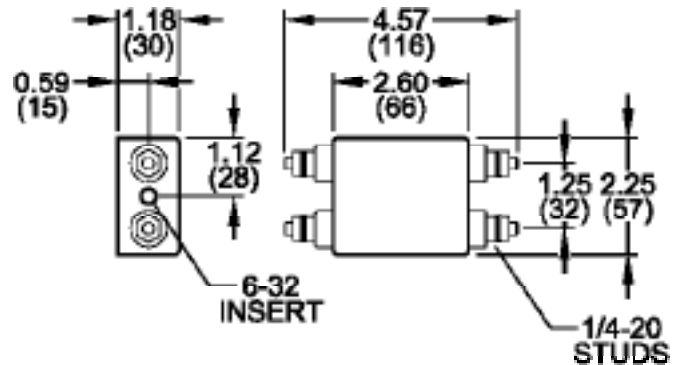
ROHS COMPLIANT



### SPECIFICATIONS

Operating Freq.	: DC/50/60Hz
Usable Freq.	: DC-400Hz
Max. Operating Voltage	: 250VAC/DC
Operating Current	: 50A
Ambient Temperature	: -25 to 50C
Climatic Class	: 25/100/21
Hipot Rating (L-G)	: 2700VDC
Safety Approvals	: CSA/NEMKO/UR
Typ. Weight, LBS (KG)	2.0 (0.9)

### MECHANICAL

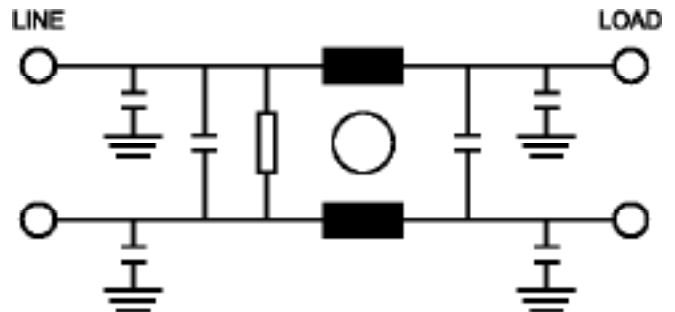


TYPICAL TOLERANCE: +/-0.02 (0.50)

### TYPICAL INSERTION LOSS dB (50/50ohm)

FREQ (MHz)	.15	.5	1.0	10	30
CM(dB)	20	38	56	62	50
DM(dB)	26	50	60	64	60

### SCHEMATIC



Reference purposes only.  
Specifications are subject to change.  
Consult factory to verify specifications.