



**RPTC2012-60**

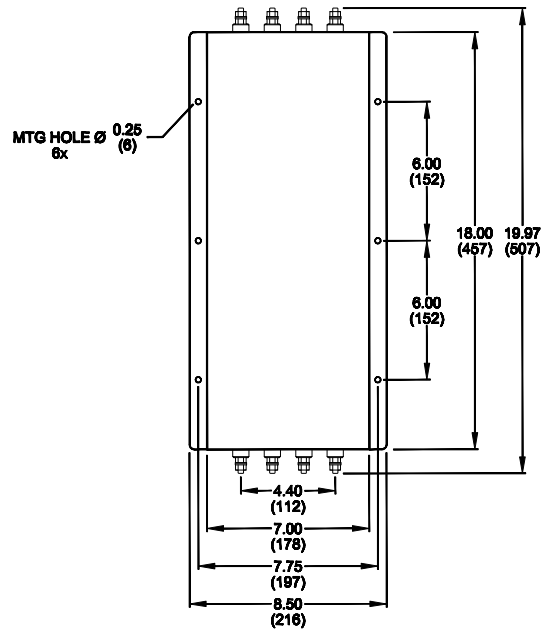
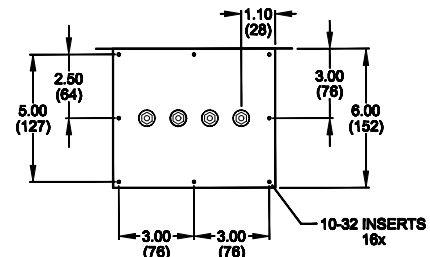
**TEMPEST/COTS AC 3PH WYE, 480V EMI Power Line Filter**

**RPTC2012-60  
TEMPEST/ COTS  
3 PHASE WYE, 60A, 480V  
100dB  
14K - 10GHz**



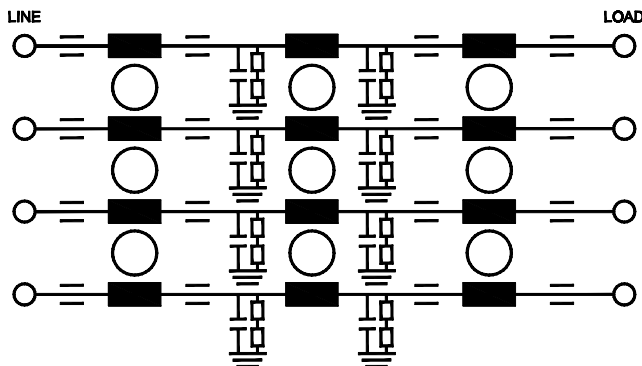
SPECIFICATIONS	
Operating Freq.	: 47-63Hz
Operating Voltage	: 480VAC
Ambient Temperature	: -40 to 70C
Hipot Rating	: 1500VDC (P/N-E)
Terminals (-T)	: S: 1/4-20
Applications	: TEMPEST/Mil-461/ DO-160
Weight LBS (Kg)	: 50.00 (22.68)

**MECHANICAL**



TYPICAL TOLERANCE: +/-0.02 (0.50)

**SCHEMATIC**



Reference purposes only.  
Specifications are subject to change.