



**RPTC2010-30**

**TEMPEST/COTS AC 1PH EMI Power Line Filter**

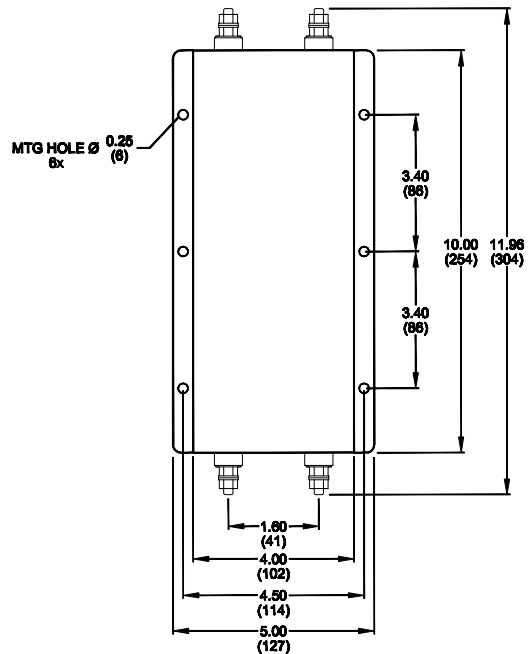
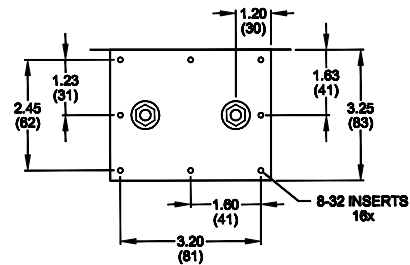
**RPTC2010-30  
TEMPEST/ COTS  
30A, 100dB  
14K - 10GHz**



**SPECIFICATIONS**

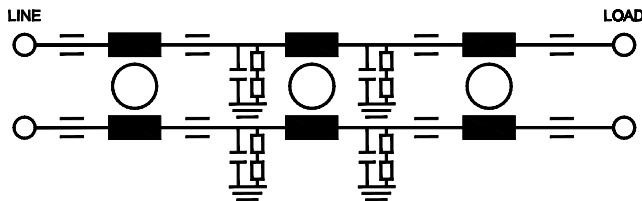
Operating Freq.	: 47-63Hz
Operating Voltage	: 300VAC
Ambient Temperature	: -40 to 70C
Hipot Rating	: 1500VDC (P/N-E)
Terminals (-T)	: S: 1/4-20
Applications	: TEMPEST/Mil-461/ DO-160
Weight LBS (Kg)	:

**MECHANICAL**



TYPICAL TOLERANCE: +/-0.02 (0.50)

**SCHEMATIC**



Reference purposes only.  
Specifications are subject to change.