



RPTC2004-100

TEMPEST/COTS AC 3PH, WYE EMI Power Line Filter

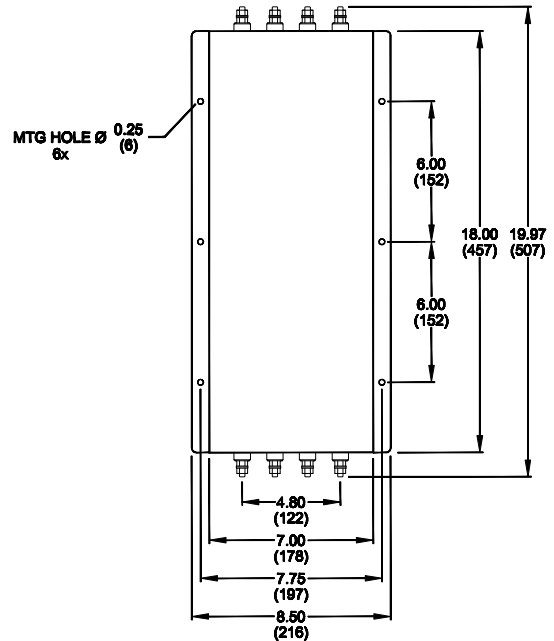
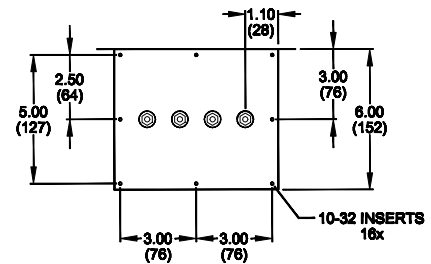
**RPTC2004-100
TEMPEST/ COTS
3 PHASE, 100A, 480V
100dB
14K -10GHz**



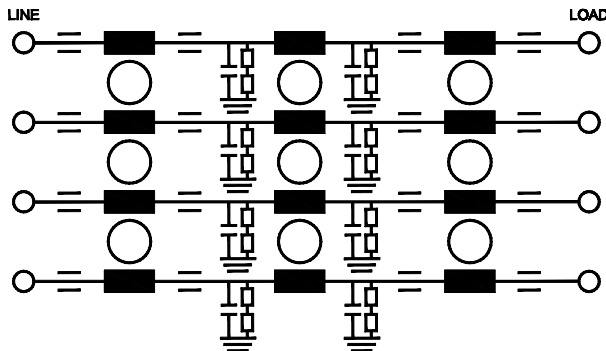
SPECIFICATIONS

Operating Freq.	: 47-63Hz
Operating Voltage	: 480VAC
Ambient Temperature	: -40 to 70C
Hipot Rating	: 1500VDC (P/N-E)
Terminals (-T)	: S: 1/4-20
Applications	: TEMPEST/Mil-461/ DO-160
Weight LBS (Kg)	: 50.00 (22.68)

MECHANICAL



SCHEMATIC



TYPICAL TOLERANCE: +/-0.02 (0.50)

www.radiuspower.com

Reference purposes only.
Specifications are subject to change.

Engineering Assistance: engg@radiuspower.com
Sales: sales@radiuspower.com