



**RPTC2001-225**

**TEMPEST/COTS AC 3PH WYE EMI Power Line Filter**

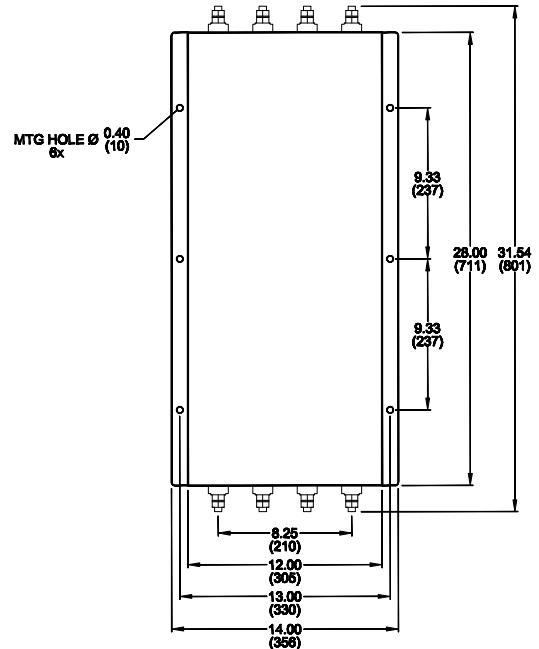
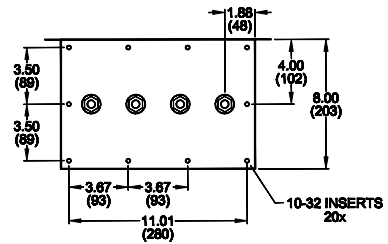
**RPTC2001-225  
TEMPEST/ COTS  
3 PHASE, 225A, 480V  
100dB  
14K - 10GHz**



**SPECIFICATIONS**

Operating Freq.	: 47-63Hz
Operating Voltage	: 480VAC
Ambient Temperature	: -40 to 70C
Hipot Rating	: 1500VDC (P/N-E)
Terminals (-T)	: S: 1/2-13
Applications	: TEMPEST/Mil-461/ DO-160
Weight LBS (Kg)	: 150.00 (68.00)

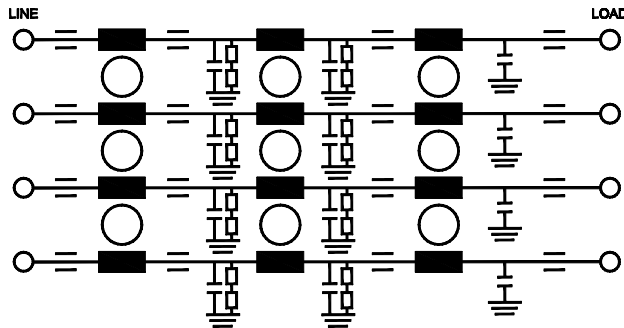
**MECHANICAL**



TYPICAL TOLERANCE: +/-0.02 (0.50)

[www.radiuspower.com](http://www.radiuspower.com)

**SCHEMATIC**



Reference purposes only.  
Specifications are subject to change.

Engineering Assistance: [engg@radiuspower.com](mailto:engg@radiuspower.com)  
Sales: [sales@radiuspower.com](mailto:sales@radiuspower.com)