



## RPT5510 Series

## TEMPEST/COTS AC EMI Power Line Filter

**RPT5510  
TEMPEST/ COTS TO 25A  
PERFORMANCE TO 10GHZ  
70dB**



### SPECIFICATIONS

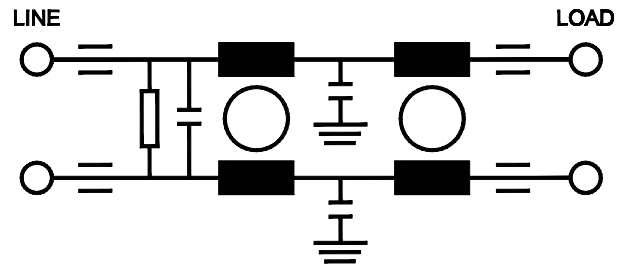
Operating Freq.	: 50/60/400Hz
Operating Voltage	: 300VAC
Ambient Temperature	: -40 to70C
Hipot Rating	: 1500VDC (P/N-E)
Terminals (-T)	: S: M5
Applications	: TEMPEST/Mil-461/ DO-160
Leakage Current	: 3.5mA/ Line (250V/60Hz)

**Note:**

Call for other termination types (e.g. Circular Mil Connectors, etc.)

Leakage current is directly related to the line-ground caps in the filter. If higher leakage current is allowed, the caps can be increased to improve the low frequency insertion loss

### SCHEMATIC



### PART NUMBER/ ORDERING

RPT5510	-X (Amps)	-T	WT LBS (Kg) TYP
	5	S	1.4 (0.6)
	10		1.4 (0.6)
	15		1.8 (0.8)
	25		2.2 (1.0)

### Typical CM Insertion Loss, 50ohm

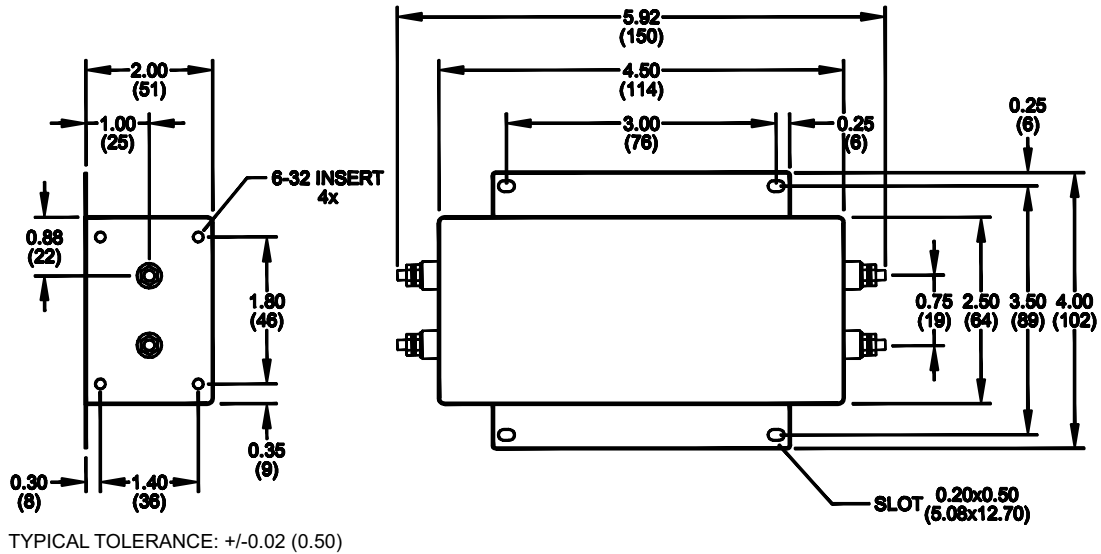
10KHz	10dB
100KHz	40dB
500KHz	60dB
1MHz-10GHz	70dB

[www.radiuspower.com](http://www.radiuspower.com)

Reference purposes only.  
Specifications are subject to change.



RPT5510  
Mechanical Dimensions



TYPICAL TOLERANCE: +/-0.02 (0.50)