

DSC1000-5

High Performance Single Stage Power Line Filter

DSC1000-5 16A CHASSIS MOUNT FILTER

ROHS COMPLIANT



SPECIFICATIONS

Operating Freq.	: 50/60Hz
Usable Freq.	: DC - 400Hz
Operating Voltage	: 250V +10%
Rated Current	: 16A
Ambient Temperature	: -25 to 40C
Climatic Category	: 25/100/21
Hipot Rating	: 2700VDC (P/N-E)
Terminals (-T)	: QD: 0.25 Tabs
Safety Approvals	: cURus, EN60939
Weight LBS (Kg) TYP	: 0.8 (0.4)

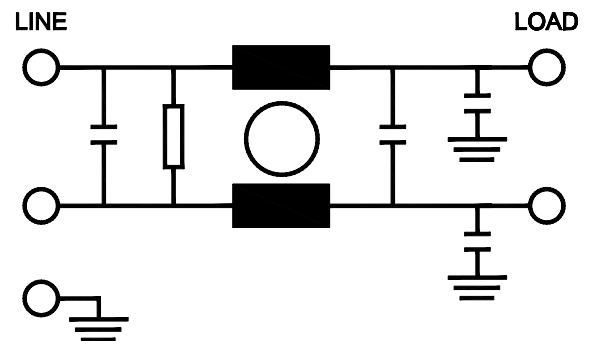
TYPICAL INSERTION LOSS, dB (50/50ohm)

FREQ (MHz)	.15	.5	1.0	10	30
CM(dB)	38	60	65	50	50
DM(dB)	28	48	60	60	60

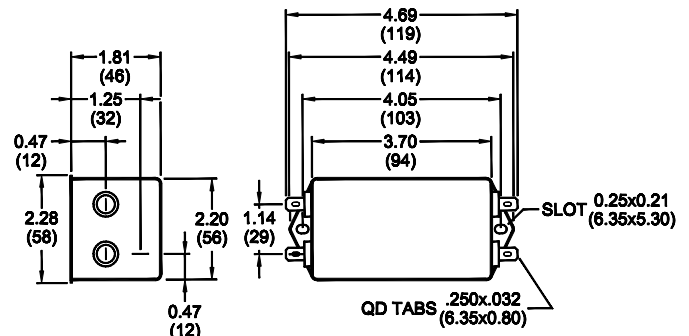
PART NUMBER/ ORDERING

DSC1000-5	-Y (Ycap, nF)	-T	LK, mA	
			120V/60Hz	250V/60Hz
	0	QD	0	0
	.47		0.04	0.08
	1		0.09	0.18
	2.2		0.2	0.4
	4.7		0.4	0.8
	10		0.9	1.8

SCHEMATIC



MECHANICAL



TYPICAL TOLERANCE: +/-0.02 (0.50)

www.radiuspower.com