



RPM9000 Series

MIL/COTS AC 1-PH, IEC Inlet EMI Power Line Filter

**RPM9000
MILITARY/ COTS TO 20A
IEC 320 INLET STYLE
MIL-STD-461/ DO-160**



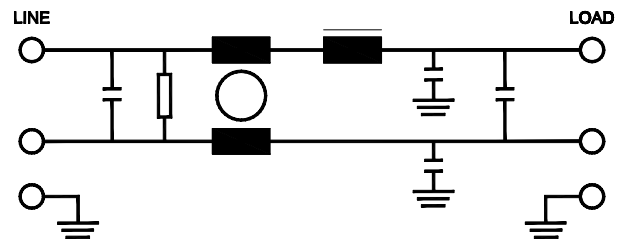
SPECIFICATIONS

Operating Freq.	: 50/60Hz
Operating Voltage	: 250VAC
Ambient Temperature	: -25 to 55C
Hipot Rating	: 1800VDC (P/N-E)
Terminals (-T)	: Q: 0.25x0.032 QDS
Typical Leakage Current	<3.5mA
Applications	: Mil-461/ DO-160

Typical Insertion Loss, 50ohm

FREQ (MHz)	.01	.15	.5	1	10	50	100
CM (dB)	16	38	50	60	50	45	35
DM (dB)	28	45	60	60	60	-	-

SCHEMATIC



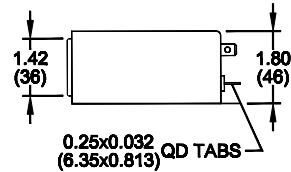
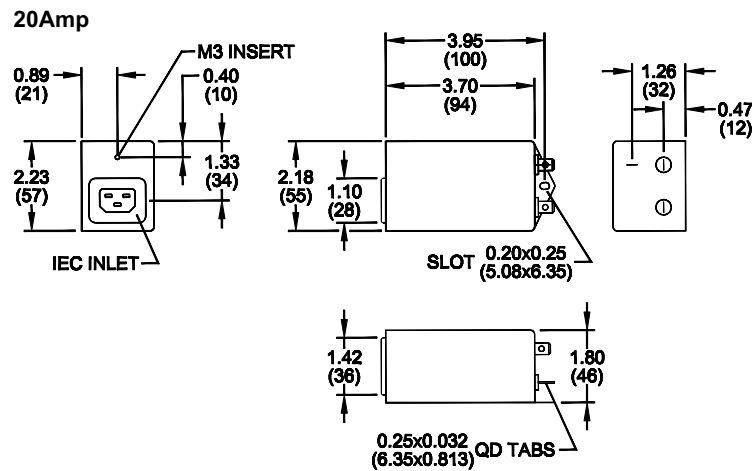
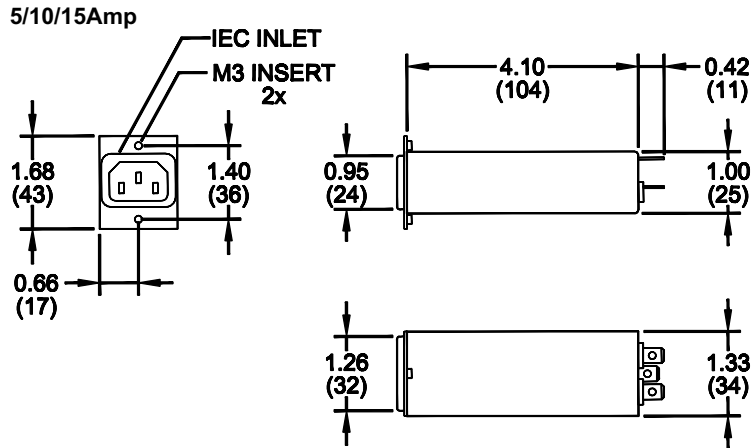
PART NUMBER/ ORDERING

RPM9000	-X (Amps)	-T	WT LBS (Kg) TYP
	5	QD	0.5 (0.2)
	10		0.5 (0.2)
	15		0.5 (0.2)
	20		0.8 (0.4)

www.radiuspower.com

Reference purposes only.
Specifications are subject to change.

RPM9000
Mechanical Dimensions



TYPICAL TOLERANCE: +/-0.02 (0.50)